



NASHCO[®]

2026 NASHCO PRODUCT CATALOGUE



THE NASHCO STORY

NASHCO IS A FAMILY OWNED BUSINESS THAT WAS FIRST REGISTERED IN 1978. NASHCO HAS A LONG ASSOCIATION WITH THE ROLL FORMING INDUSTRY, WITH THE FOUNDER, HAVING HIS FIRST INVOLVEMENT AS FAR BACK AS THE 1960'S. NASHCO'S FIRST FORAY INTO THE CEILING AND WALL INDUSTRY WAS WHEN THEY CONVERTED THEIR ROLL FORMER TO ROLL DOMESTIC CEILING BATTEN. FROM THIS, NASHCO HAS EXPANDED TO COVER THE FULL RANGE OF DRYWALL SYSTEMS AND SUSPENDED CONCEALED CEILING SYSTEMS.

TODAY NASHCO OPERATES FROM A NEW PURPOSE BUILT WAREHOUSE AND FACTORY COMPLEX, THAT PROVIDES ROOM FOR FUTURE GROWTH AS THE CENTURY UNFOLDS.

NASHCO STRIVES TO PROVIDE AN ENJOYABLE CUSTOMER EXPERIENCE TO OUR EXPANSIVE CUSTOMER BASE ACROSS AUSTRALIA, SUPPLYING QUALITY, LOCALLY MADE ROLL FORMED PRODUCTS TO THE BUILDING INDUSTRY AS WELL AS A RANGE OF LOCAL AND GLOBALLY SOURCED ACCESSORIES TO FILL THE NEEDS OF THE DRYWALL, CLADDING AND FITOUT INDUSTRIES.

28 CARRINGTON STREET QUEANBEYAN, NSW 2620

02 6124 3400

support@nashco.com.au

www.nashco.com.au

EDITION: 2026LPE-II





CONCEALED CEILING SYSTEMS	05
TOP CROSS RAIL, FURRING CHANNEL, WALL TRACK	7-8
SUSPENDED SYSTEM - DIRECT FIX, PLAIN ROD, THREADED ROD	8-15
CEILING CALCULATOR	16
WALL SYSTEMS	17
STUD AND TRACK 0.50, 0.55, 0.70, 0.75, 1.15 GAUGE	18-21
INTELLIJAMB® EXTERNAL FRAMING SYSTEM	22
NOGGINGS AND ANGLES	23-24
SUPPORT POSTS	24
SPEED PANEL DEFLECTION TRACK	24
CLADDING SYSTEMS	25
TOP HAT BATTEN	26
FAÇADE TOP HATS AND BRACKETS	27-28
OTHER SYSTEMS	29
ACOUSTIC SOUND ISOLATION SYSTEMS	30
FLEXIBLE TRACK AND PREFABRICATION	31
FLAT SHEET AND PROCESSING	32
BRACING AND HOOP IRON	32
ACCESS PANELS	33
METAL DOOR ACCESS PANELS	35
MDF DOOR ACCESS PANELS	36
FIRE RATED ACCESS PANELS	37
NON-STANDARD ACCESS PANELS	38-40
FINISHING SECTIONS	41
METAL SETTING ANGLES	42-43
TRIMTEX PVC SETTING ANGLES	44-45
SQUARE SET FINISHING SECTIONS	47-48
ADDITIONAL PRODUCTS	49
FASTENERS	50-52
CUSTOM MADE RODS	53
PLASTER ACCESSORIES	54
ACCESSORIES	55
GUIDES	57
NASHCO DESIGN PLUS	58
NOTES	59



DELIVERY



CANBERRA METROPOLITAN

WE COVER THE CANBERRA METROPOLITAN AREA TWICE DAILY. YOU HAVE THE ACCESS TO FREE CRANE TRUCK DELIVERY WHEN REQUIRED AND SAME DAY DISPATCH. ORDERS PLACED BY 11AM CAN BE DELIVERED THAT AFTERNOON AND ORDERS PLACED BY 2PM CAN BE DELIVERED THE NEXT MORNING.

FREE DELIVERY

FREE DELIVERY IS OFFERED IN THE CANBERRA METROPOLITAN AREA FOR ORDERS VALUED OVER \$400 EX GST. THESE DELIVERIES ARE INCLUDED IN THE MORNING AND AFTERNOON DELIVERY SCHEDULES.

EXPRESS SERVICE

DECREASING YOUR DOWNTIME! WE OFFER A SERVICE FOR WHEN YOU HAVE WORKERS ON SITE WITHOUT PRODUCT! THIS SERVICE IS A CHARGEABLE PREMIUM SERVICE WHEN YOU NEED PRODUCTS FASTER THAN OUR STANDARD SERVICE WILL DELIVER.

SPECIAL SERVICES

WE OFFER A RANGE OF SOLUTIONS TAILORED TO YOUR REQUIREMENTS INCLUDING, SPECIAL PACKING FOR MULTISTORY CRANE UNLOADING, CRANE TRUCK DELIVERY, PACK LABELING, SMALL VEHICLE DELIVERY, AND MUCH MORE. DISCUSS YOUR REQUIREMENTS WITH US TODAY!

INTERSTATE

OUR TRANSPORT NETWORK SERVICES ALL MAJOR CITIES IN AUSTRALIA.

INTERNATIONAL

MATERIALS ARE PACKAGED IN OPEN TOP OR CURTAIN SIDE CONTAINERS DEPENDING ON THE UNLOADING REQUIREMENTS.

ORDER & COLLECT

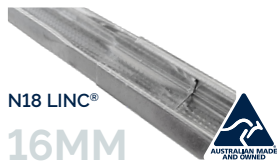
NO TIME TO WAIT? ORDERS SENT TO US WILL BE READY FOR COLLECTION IN 30 MINUTES.



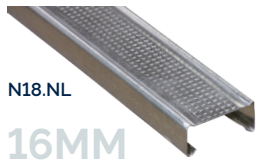
CONCEALED CEILING SYSTEMS

nashco.com.au 28 Carrington St Queanbeyan, NSW 2620 02 6124 3400 support@nashco.com.au

BATTENS, CHANNELS AND JOINERS

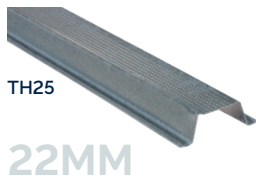


PART	DESCRIPTION	LENGTH	SUB PACK	BULK PACK	KG/BULK PACK
N1848	16.5MM N18 LINC®	4800	10	300	400
N1860	16.5MM N18 LINC®	6000	10	300	500



PART	DESCRIPTION	LENGTH	SUB PACK	BULK PACK	KG/BULK PACK
N1848.NL	16.5MM CEILING BATTEN	4800	12	420	560
N1860.NL	16.5MM CEILING BATTEN	6000	12	420	700

NOTE | N4230 16MM WALL TRACK SUITS **NO8/N18** (SEE PAGE 7)



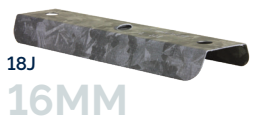
PART	DESCRIPTION	LENGTH	SUB PACK	BULK PACK	KG/BULK PACK
TH2561	22MM TOP HAT CEILING BATTEN	6100	10	200	464

NOTE | N4136 22MM WALL TRACK SUITS **TH25** (SEE PAGE 7)

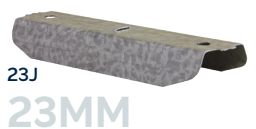


PART	DESCRIPTION	LENGTH	SUB PACK	BULK PACK	KG/BULK PACK
N005	BACK BLOCKING BATTEN	300	100	100	8
N23005 ^N	BACK BLOCKING BATTEN	300	100	100	11

NOTE | BACK BLOCKING BATTENS HAVE A 2.5MM CURVE OVER LENGTH AND ARE DESIGNED TO BE SCREWED ACROSS A BUTT PLASTERBOARD JOINT TO PROVIDE A RECESSED SETTING EDGE.



PART	DESCRIPTION	LENGTH	SUB PACK	BULK PACK	KG/BULK PACK
18J	BATTEN JOINER [SUITS N18.NL]	132	100	500	17



PART	DESCRIPTION	LENGTH	SUB PACK	BULK PACK	KG/BULK PACK
23J	FURRING CHANNEL JOINER [SUITS N23]	132	100	500	19.5

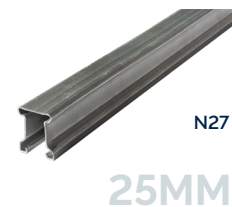


PART	DESCRIPTION	LENGTH	SUB PACK	BULK PACK	KG/BULK PACK
N38	FURRING CHANNEL JOINER [SUITS N08/N29]	100	100	300	15.6

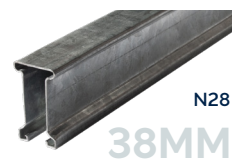


PART	DESCRIPTION	LENGTH	SUB PACK	BULK PACK	KG/BULK PACK
N88	ANGLE JOINER	50x50	100	500	6

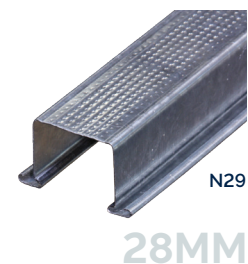
PART	DESCRIPTION	LENGTH	SUB PACK	BULK PACK	KG/BULK PACK
N2736	25MM TOP CROSS RAIL 0.75BMT	3600	10	200	375
N2748	25MM TOP CROSS RAIL 0.75BMT	4800	10	200	500
N2760	25MM TOP CROSS RAIL 0.75BMT	6000	10	200	625



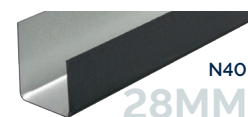
PART	DESCRIPTION	LENGTH	SUB PACK	BULK PACK	KG/BULK PACK
N2848	38MM TOP CROSS RAIL 0.75BMT HEAVY DUTY	4800	5	125	650



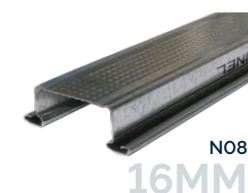
PART	DESCRIPTION	LENGTH	SUB PACK	BULK PACK	KG/BULK PACK
N2927	28MM FURRING CHANNEL	2700	8	240	338
N2930	28MM FURRING CHANNEL	3000	8	240	375
N2936	28MM FURRING CHANNEL	3600	8	240	450
N2942	28MM FURRING CHANNEL	4200	8	240	550
N2948	28MM FURRING CHANNEL	4800	8	240	600
N2960	28MM FURRING CHANNEL	6000	8	240	750



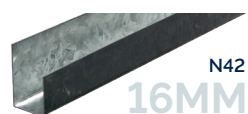
PART	DESCRIPTION	LENGTH	SUB PACK	BULK PACK	KG/BULK PACK
N4030	28MM WALL TRACK [SUITS N29]	3000	10	200	220



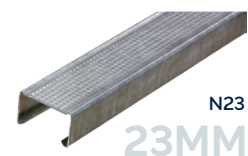
PART	DESCRIPTION	LENGTH	SUB PACK	BULK PACK	KG/BULK PACK
N0827	16MM FURRING CHANNEL	2700	8	240	260
N0830	16MM FURRING CHANNEL	3000	8	240	288
N0836	16MM FURRING CHANNEL	3600	8	240	345
N0848	16MM FURRING CHANNEL	4800	8	240	460
N0860	16MM FURRING CHANNEL	6000	8	240	576



PART	DESCRIPTION	LENGTH	SUB PACK	BULK PACK	KG/BULK PACK
N4230	16MM WALL TRACK [SUITS N08/N18]	3000	10	200	453



PART	DESCRIPTION	LENGTH	SUB PACK	BULK PACK	KG/BULK PACK
N2327	23MM FURRING CHANNEL	2700	12	420	410
N2330	23MM FURRING CHANNEL	3000	12	420	462
N2336	23MM FURRING CHANNEL	3600	12	420	547
N2350	23MM FURRING CHANNEL	5000	12	420	760



PART	DESCRIPTION	LENGTH	SUB PACK	BULK PACK	KG/BULK PACK
N4136	23MM WALL TRACK [SUITS N23/TH25]	3600	10	200	200

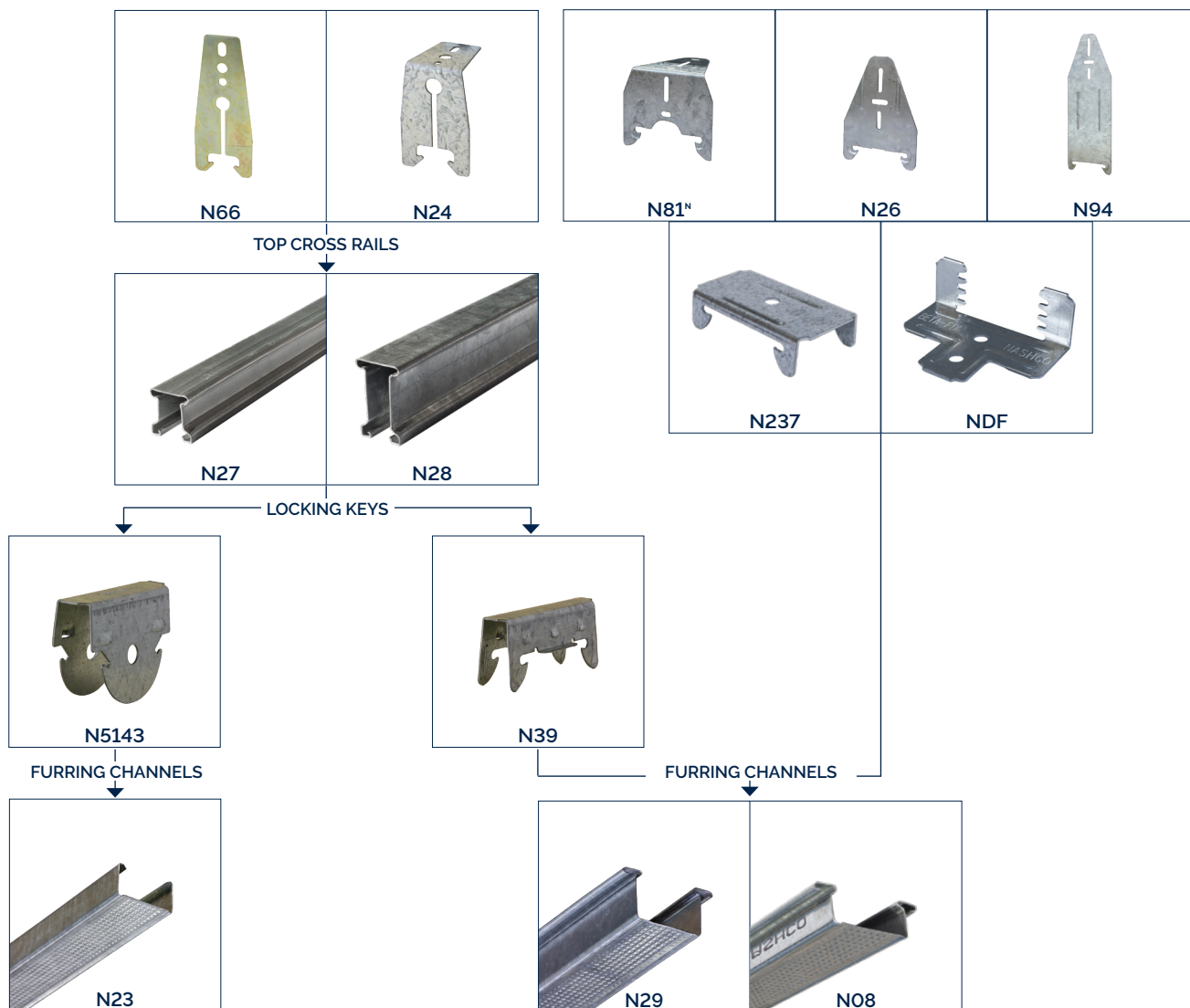


SUSPENDED SYSTEM - DIRECT FIX CLIPS

OPTION 1



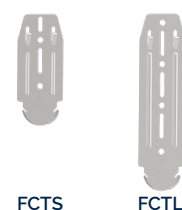
OPTION 2



NOTE | *N81 IS MADE TO ORDER. OTHER CUSTOM LENGTH RIGHT ANGLE BRACKETS CAN BE MADE TO ORDER. SUBJECT TO LEAD TIMES.

SUSPENSION CLIPS

PART	DESCRIPTION	HEIGHT IN ASSEMBLY ^N	SUB PACK	BULK PACK	KG/BULK PACK
FCTS	SHORT DIRECT FIX CLIP [SUITS N18/N23]	92	100	500	11.8
FCTL	LONG DIRECT FIX CLIP [SUITS N18/N23]	155	100	500	20.2



FCTS

FCTL

NOTE | AVAILABILITY SUBJECT TO EXISTING DESIGN STOCKS.

PART	DESCRIPTION	HEIGHT IN ASSEMBLY ^N	SUB PACK	BULK PACK	KG/BULK PACK
N19	DIRECT FIX CLIP [SUITS N18/N23]	2	100	500	11.9
N20	DIRECT FIX CLIP [SUITS N18/N23]	9	100	500	12.6



N19

N20

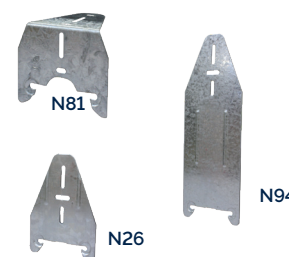
PART	DESCRIPTION	HEIGHT IN ASSEMBLY ^N	SUB PACK	BULK PACK	KG/BULK PACK
N66	DIRECT FIX CLIP [SUITS N27/N28]	80	100	500	10.9
N24	90° DIRECT FIX CLIP [SUITS N27/N28]	45	100	500	10.8



N66

N24

PART	DESCRIPTION	HEIGHT IN ASSEMBLY ^N	SUB PACK	BULK PACK	KG/BULK PACK
N81 ^{N1}	90° DIRECT FIX CLIP [SUITS N29/N08]	40	100	500	30
N26 ^{N3}	DIRECT FIX CLIP SHORT [SUITS N29/N08]	95	100	500	20
N94 ^{N3}	DIRECT FIX CLIP LONG [SUITS N29/N08]	190	100	300	23



N81

N26

N94

NOTE | ^{N1} CUSTOM SIZES AVAILABLE WITH MIN. QUANTITIES ON REQUEST AND SUBJECT TO LEAD TIME.

PART	DESCRIPTION	HEIGHT IN ASSEMBLY ^N	SUB PACK	BULK PACK	KG/BULK PACK
N237 ^{N2}	SUSPENSION CLIP	5	100	500	15
NDF ^{N2}	ADJUSTABLE DIRECT FIX CLIP	2-20	100	200	7.7



N237

NDF

NOTE | ^{N2} SUITS N29/N08. CAN ALSO BE USED FOR WALL SYSTEMS.

LOCKING KEYS

PART	DESCRIPTION	HEIGHT IN ASSEMBLY	SUB PACK	BULK PACK	KG/BULK PACK
N39	TCR TO N08/N29 FURRING CHANNEL	-	100	500	9.6
N5143	TCR TO N23 FURRING CHANNEL	-	100	500	8.6

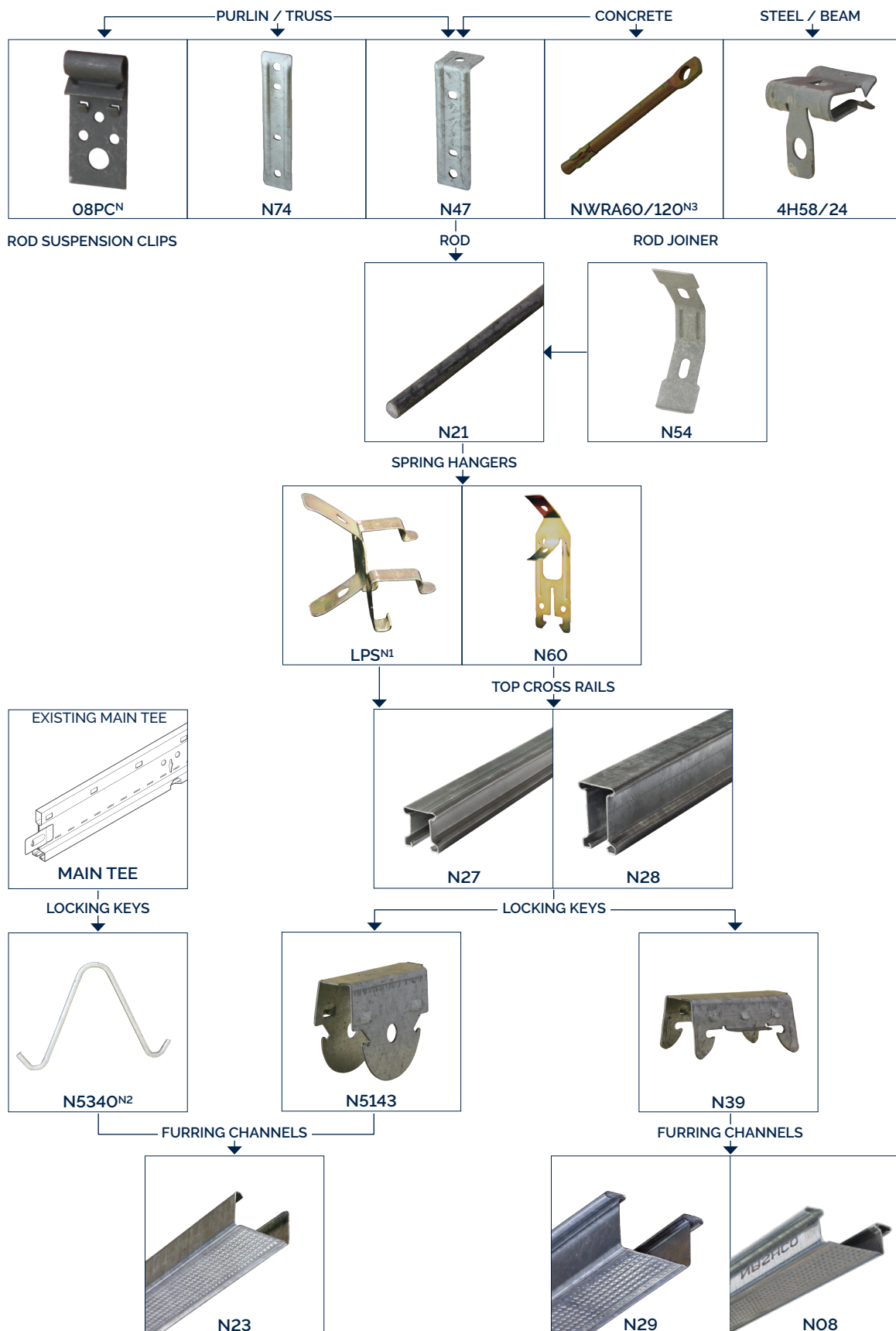


N5143

N39

NOTE | ^N EXCLUDING FURRING CHANNEL HEIGHT.

SUSPENDED SYSTEM - 5MM PLAIN ROD



NOTE ^N08PC MAY NOT BE SUITABLE FOR CEILING SUSPENSION

NOTE ^{N1}LPS TCR HANGER IS ONLY SUITABLE FOR A SINGLE LAYER OF PLASTERBOARD.

NOTE ^{N2}N5340 ONLY COMPATIBLE WITH N23 FURRING CHANNEL AND CERTAIN MAIN TEES

NOTE ^{N3}NWRA ARE NOT ETA-APPROVED. WHERE ETA APPROVAL IS REQUIRED, N47 WITH ETA-APPROVED SCREW ANCHORS ARE RECOMMENDED.

SUSPENSION ROD CLIPS

PART	DESCRIPTION	HEIGHT IN ASSEMBLY	SUB PACK	BULK PACK	KG/BULK PACK
O8PC ^N	VERTICAL FLANGE PURLIN CLIP	40	100	100	0.9
N47	90° SUSPENSION ROD BRACKET	85	100	500	11.3
N47.8	SUSPENSION ROD BRACKET 8MM HOLE	85	100	500	11.3
N74	FLAT SUSPENSION ROD BRACKET	108	100	500	11.2
NWRA60 ^{N3}	60MM SUSPENSION ROD ANCHOR	15	100	100	1.2
NWRA120 ^{N3}	120MM SUSPENSION ROD ANCHOR	75	100	100	2.4



PART	DESCRIPTION	HEIGHT IN ASSEMBLY	SUB PACK	BULK PACK	KG/BULK PACK
4H24	BEAM CLAMP 3-7MM	35	100	100	1.5
4H58	BEAM CLAMP 8-13MM	35	100	100	1.5



ROD AND JOINER

PART	DESCRIPTION	HEIGHT IN ASSEMBLY	SUB PACK	BULK PACK	KG/BULK PACK
N21	5MM PLAIN SUSPENSION ROD (LENGTH)	4000	40	1600	500
N54	SUSPENSION ROD JOINER	82	100	500	5



SPRING HANGERS

PART	DESCRIPTION	HEIGHT IN ASSEMBLY	SUB PACK	BULK PACK	KG/BULK PACK
LPS ^{N2}	LOW PROFILE TCR HANGER [SUITS N27]	32	100	200	4
N60	TCR SPRINGHANGER [SUITS N27/N28]	102	50 100	250	5.2

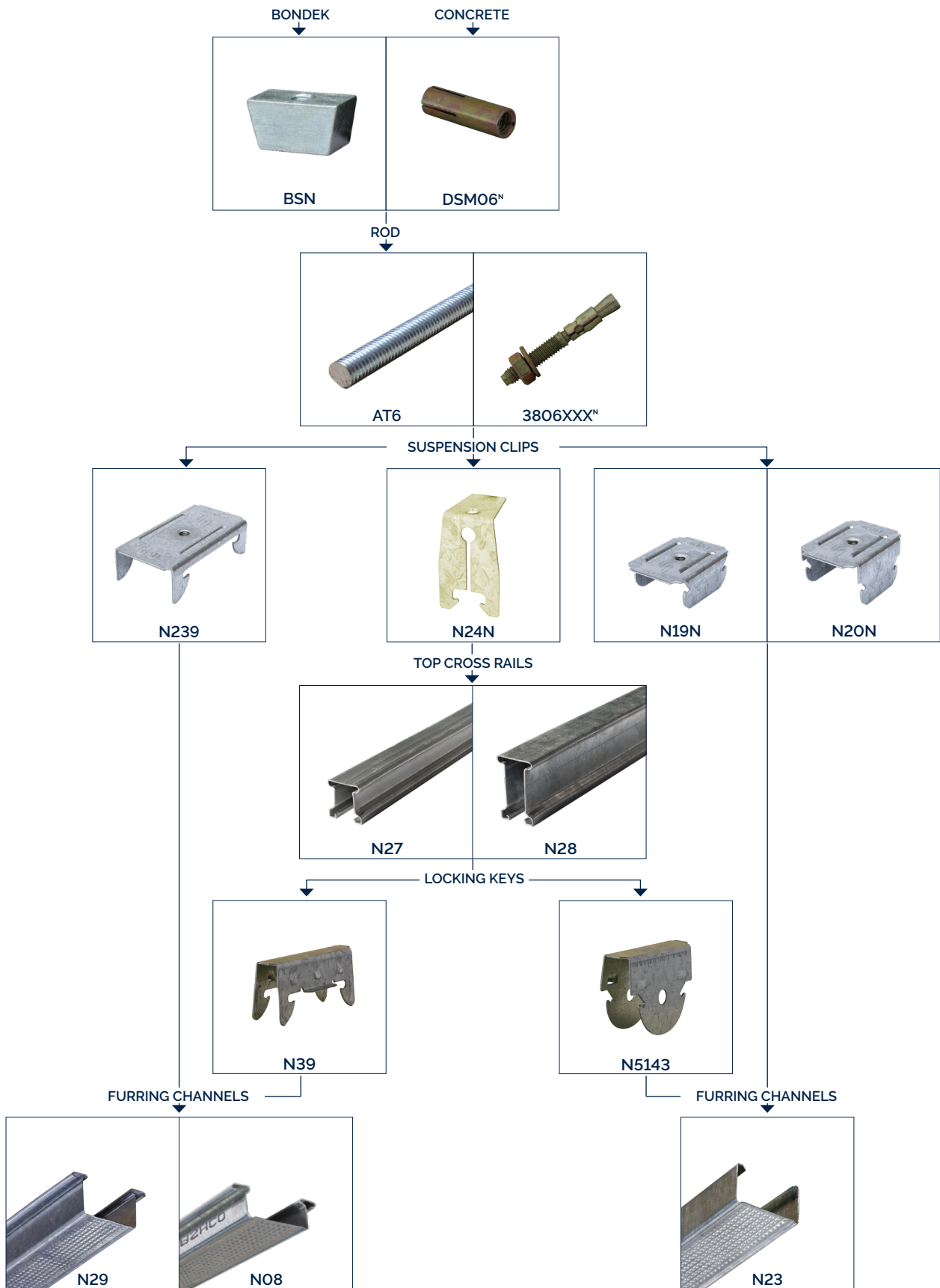


LOCKING KEYS

PART	DESCRIPTION	HEIGHT IN ASSEMBLY	SUB PACK	BULK PACK	KG/BULK PACK
N39	TCR TO N08/N29 FURRING CHANNEL	-	100	500	9.6
N5143	TCR TO N23 FURRING CHANNEL	-	100	500	8.6
N5340 ^{N2}	MAIN TEE TO N23 FURRING CHANNEL	-	100	2000	10.4



SUSPENDED SYSTEM - 6MM THREADED ROD



NOTE | ^NETA-APPROVED OPTIONS AVAILABLE

NUT AND ANCHORS

PART	DESCRIPTION	SUB PACK	BULK PACK	KG/BULK PACK
BSN	6MM THREADED WEDGE NUT [SUITS BONDEK]	100	100	2.7
DSM06	6MM DYNASET ANCHOR	100	100	0.7
4106	DYNASET SETTING TOOL	1	1	-



ROD AND ANCHORS

PART	DESCRIPTION	HEIGHT IN ASSEMBLY	SUB PACK	BULK PACK	KG/BULK PACK
AT6	6MM THREADED ROD [LENGTH]	3000	10	100	4.8
3806065	TRUBOLT MASONRY ANCHOR 65MM	25	100	100	1.5
3806085	TRUBOLT MASONRY ANCHOR 85MM	45	100	100	1.8
3806100	TRUBOLT MASONRY ANCHOR 100MM	60	100	100	2.1
3806120	TRUBOLT MASONRY ANCHOR 120MM	80	100	100	2.4
3806150	TRUBOLT MASONRY ANCHOR 150MM	110	100	100	2.9
3806180	TRUBOLT MASONRY ANCHOR 180MM	140	100	100	3.2



ROD SUSPENSION CLIPS

PART	DESCRIPTION	HEIGHT IN ASSEMBLY	SUB PACK	BULK PACK	KG/BULK PACK
N239	CLIP WITH 6MM THREAD [SUITS N29/N08]	7	100	500	16
N24N	CLIP WITH 6MM THREAD [SUITS N27/N28]	48	100	500	12.5
N19N ^N	CLIP WITH 6MM THREAD [SUITS N18/N23]	3	100	500	11.9
N20N	CLIP WITH 6MM THREAD [SUITS N18/N23]	9	100	500	12.6



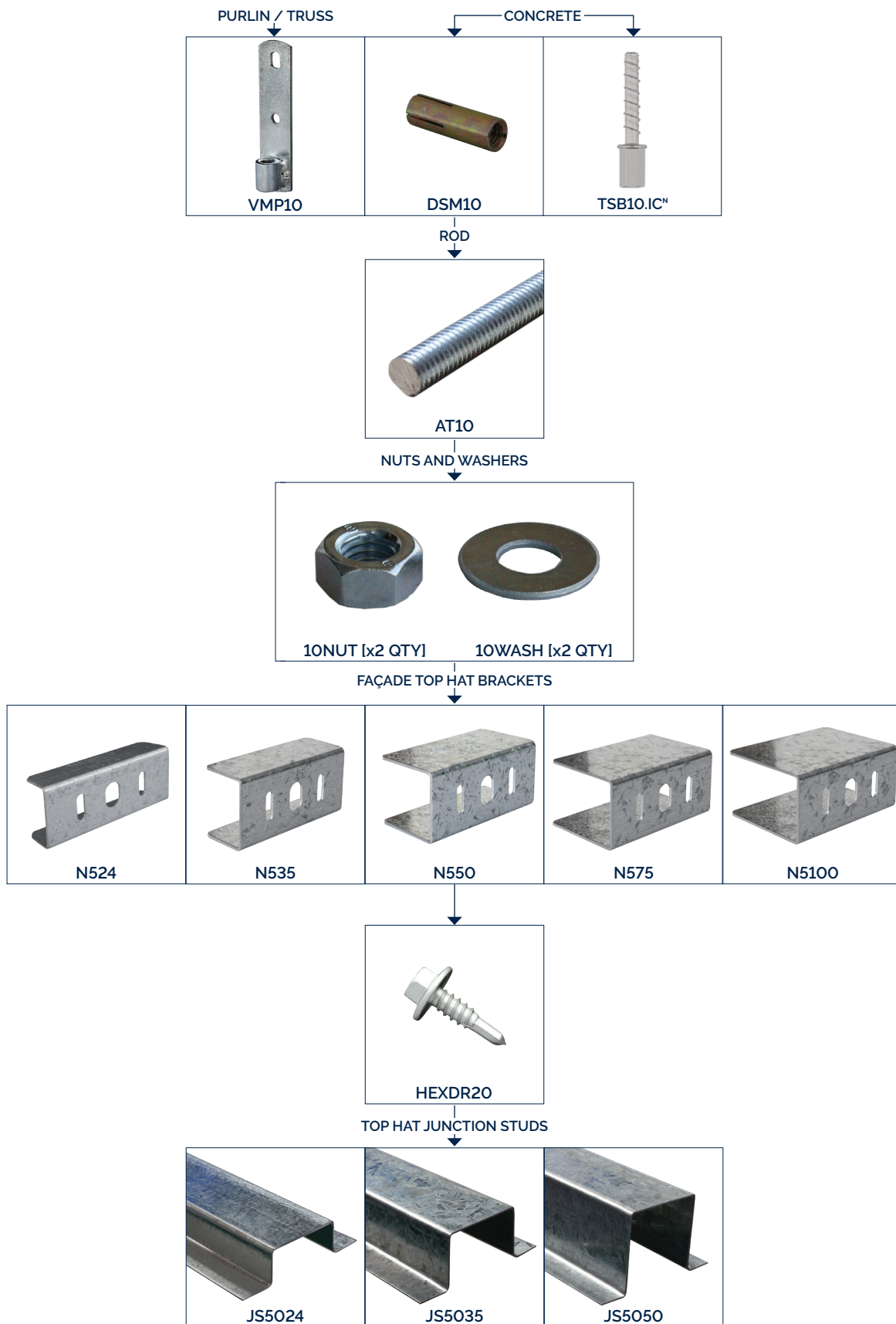
NOTE | ^NSUBJECT TO LEAD TIME.

LOCKING KEYS

PART	DESCRIPTION	HEIGHT IN ASSEMBLY	SUB PACK	BULK PACK	KG/BULK PACK
N5143	TCR TO N23 FURRING CHANNEL	0	100	500	8.6
N39	TCR TO N08/N29 FURRING CHANNEL	0	100	500	9.6



SUSPENDED SYSTEM - 10MM THREADED ROD



NOTE | ^NETA-APPROVED SCREW ANCHOR

ANCHORS

PART	DESCRIPTION	HEIGHT IN ASSEMBLY	SUB PACK	BULK PACK	KG/BULK PACK
VMP10	10MM VERTICAL MOUNTING PLATE	-	1	100	2.7
DSM10	10MM DYNASET MASONRY ANCHOR	-	1	100	0.7
TSB10.IC ^N	M10 SCREWBOLT THREADED ROD ANCHOR	-	1	100	1.8



ROD

PART	DESCRIPTION	LENGTH	SUB PACK	BULK PACK	KG/BULK PACK
AT10	10MM THREADED ROD ZINC PLATED (LENGTH)	3000	10	500	1080



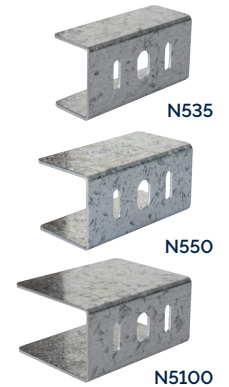
NUT AND WASHER

PART	DESCRIPTION	HEIGHT IN ASSEMBLY	SUB PACK	BULK PACK	KG/BULK PACK
10NUT	10MM HEX NUT	-	1	100	-
10WASH	10MM FLAT WASHER	-	1	100	-



FAÇADE TOP HAT BRACKETS

PART	SIZE WxH	BMT	DESCRIPTION	LENGTH	PACK SIZE	KG/BULK PACK
N524	50X24	1.9	FAÇADE TOP HAT BRACKET	100	100	15.4
N535	50X35	1.9	FAÇADE TOP HAT BRACKET	100	100	15.4
N550	50X50	1.9	FAÇADE TOP HAT BRACKET	100	100	19.8
N575	50X75	1.9	FAÇADE TOP HAT BRACKET	100	100	28.8
N5100	50X100	1.9	FAÇADE TOP HAT BRACKET	100	100	36.6

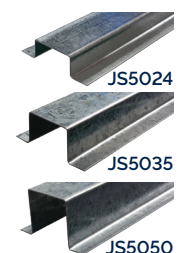


NOTE

FAÇADE TOP HAT BRACKETS NEED TO BE FIXED TO TOP HAT JUNCTION STUDS WITH 12x20 HEX HEAD DRILL POINT TEKS. (REFER TO PAGE 51)

TOP HAT JUNCTION STUDS

PART	SIZE WxH	BMT	DESCRIPTION	LENGTH	PACK SIZE	KG/BULK PACK
JS502460	50x24	1.15	50MM TOP HAT JUNCTION STUD	6000	50	342
JS503560	50x35	1.15	50MM TOP HAT JUNCTION STUD	6000	50	405
JS503572	50x35	1.15	50MM TOP HAT JUNCTION STUD	7200	50	486
JS505060	50x50	1.15	50MM TOP HAT JUNCTION STUD	6000	50	490



NOTE

^NNON-STOCK ITEMS AVAILABLE. MINIMUM QUANTITIES AND MANUFACTURING LEAD TIMES APPLY.

CEILING CALCULATOR



CEILING ESTIMATION TOOL



OUR CEILING ESTIMATOR CAN BE DOWNLOADED INTO A HANDY EXCEL FORMAT AND SAVED TO YOUR DESKTOP FOR QUICK AND EASY REFERENCE. nashco.com.au/resources/estimation-tools



OUR CEILING ESTIMATOR CAN BE USED ONLINE. SEE HELPFUL IMAGES AND LET THE SMART TOOL CHOOSE THE CORRECT COMPONENTS FOR YOU. nashco.com.au/calculator



SCAN HERE FOR A HANDY MOBILE VERSION.

DIGITAL CATALOGUE

PREFER DIGITAL? SCAN HERE FOR OUR LATEST ONLINE CATALOGUE.



KNURLED SURFACE

FASTER & EASIER INSTALL

5-10% MATERIAL SAVING

N18 LINC® CEILING BATTEN

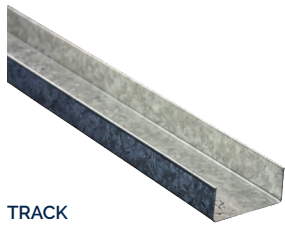
NASHCO
N18 LINC®
Ceiling Batten



WALL SYSTEMS

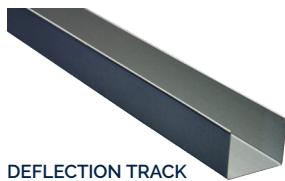
nashco.com.au 28 Carrington St Queanbeyan, NSW 2620 P 02 6124 3400 E support@nashco.com.au

0.50 | 0.55 STUD AND TRACK



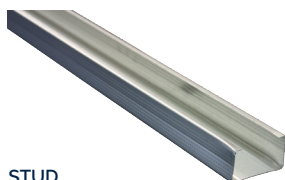
TRACK

PART	SIZE WxH	BMT	DESCRIPTION	LENGTH	SUB PACK	BULK PACK	KG/BULK PACK
51.55TR3.0	51x32	0.50	51MM TRACK	3000	10	100	157
51.75DEF3.0	51x50	0.70	51MM DEFLECTION TRACK	3000	10	100	220
51.55ST2.4	51x35	0.50	51MM STUD	2400	10	100	131
51.55ST2.7	51x35	0.50	51MM STUD	2700	10	100	146
51.55ST3.0	51x35	0.50	51MM STUD	3000	10	100	163
51.55ST3.6	51x35	0.50	51MM STUD	3600	10	100	195



DEFLECTION TRACK

PART	SIZE WxH	BMT	DESCRIPTION	LENGTH	SUB PACK	BULK PACK	KG/BULK PACK
64.55TR3.0	64x32	0.50	64MM TRACK	3000	10	100	161
64.55TR3.6	64x32	0.50	64MM TRACK	3600	10	100	193
64.55DEF3.0	64x50	0.55	64MM DEFLECTION TRACK	3000	10	100	231
64.55ST2.4	64x35	0.50	64MM STUD	2400	10	100	146
64.55ST2.7	64x35	0.50	64MM STUD	2700	10	100	164
64.55ST2.8	64x35	0.50	64MM STUD	2800	10	100	175
64.55ST2.85 ^N	64x35	0.50	64MM STUD	2850	10	100	178
64.55ST3.0	64x35	0.50	64MM STUD	3000	10	100	183
64.55ST3.6	64x35	0.50	64MM STUD	3600	10	100	219
64.55ST4.2	64x35	0.50	64MM STUD	4200	10	100	255
64.55ST4.8	64x35	0.50	64MM STUD	4800	10	100	300



STUD

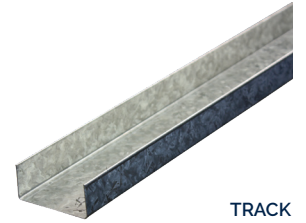
PART	SIZE WxH	BMT	DESCRIPTION	LENGTH	SUB PACK	BULK PACK	KG/BULK PACK
76.55TR3.0	76x32	0.50	76MM TRACK	3000	10	100	172
76.55DEF3.0	76x50	0.55	76MM DEFLECTION TRACK	3000	10	100	248
76.55ST2.4	76x35	0.55	76MM STUD	2400	10	100	176
76.55ST2.7	76x35	0.55	76MM STUD	2700	10	100	198
76.55ST3.0	76x35	0.55	76MM STUD	3000	10	100	220
76.55ST3.6	76x35	0.55	76MM STUD	3600	10	100	264
76.55ST4.2	76x35	0.55	76MM STUD	4200	10	100	308
76.55ST4.8	76x35	0.55	76MM STUD	4800	10	100	352

PART	SIZE WxH	BMT	DESCRIPTION	LENGTH	SUB PACK	BULK PACK	KG/BULK PACK
92.55TR3.0	92x32	0.50	92MM TRACK	3000	10	100	197
92.55TR3.6	92x32	0.50	92MM TRACK	3600	10	100	230
92.55DEF3.0	92x50	0.55	92MM DEFLECTION TRACK	3000	10	100	272
92.55ST2.4	92x35	0.55	92MM STUD	2400	10	100	193
92.55ST2.7	92x35	0.55	92MM STUD	2700	10	100	217
92.55ST3.0	92x35	0.55	92MM STUD	3000	10	100	241
92.55ST3.6	92x35	0.55	92MM STUD	3600	10	100	289
92.55ST4.2	92x35	0.55	92MM STUD	4200	10	100	337
92.55ST4.8	92x35	0.55	92MM STUD	4800	10	100	385
92.55ST6.0	92x35	0.55	92MM STUD	6000	10	100	481

0.50 | 0.55 GAUGE

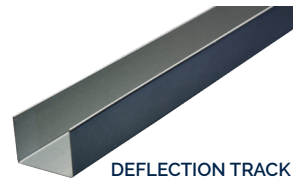
0.70 | 0.75 STUD AND TRACK

PART	SIZE WxH	BMT	DESCRIPTION	LENGTH	SUB PACK	BULK PACK	KG/BULK PACK
51.75TR3.0	51x32	0.70	51MM TRACK	3000	10	100	232
51.75DEF3.0	51x50	0.70	51MM DEFLECTION TRACK	3000	10	100	262
51.75ST3.0	51x35	0.75	51MM STUD	3000	10	100	266
51.75ST4.8	51x35	0.75	51MM STUD	4800	10	100	426



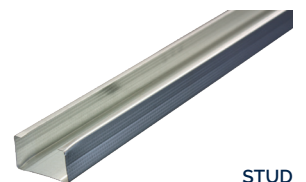
TRACK

PART	SIZE WxH	BMT	DESCRIPTION	LENGTH	SUB PACK	BULK PACK	KG/BULK PACK
64.75TR3.0	64x32	0.70	64MM TRACK	3000	10	100	232
64.75DEF3.0	64x50	0.70	64MM DEFLECTION TRACK	3000	10	100	260
64.75ST2.7	64x35	0.75	64MM STUD	2700	10	100	240
64.75ST3.0	64x35	0.75	64MM STUD	3000	10	100	266
64.75ST3.6	64x35	0.75	64MM STUD	3600	10	100	319
64.75ST4.2	64x35	0.75	64MM STUD	4200	10	100	372
64.75ST4.8	64x35	0.75	64MM STUD	4800	10	100	426
64.75ST6.0	64x35	0.75	64MM STUD	6000	10	100	510



DEFLECTION TRACK

PART	SIZE WxH	BMT	DESCRIPTION	LENGTH	SUB PACK	BULK PACK	KG/BULK PACK
76.75TR3.0	76x32	0.70	76MM TRACK	3000	10	100	260
76.75TR6.0	76x32	0.70	76MM TRACK	6000	10	100	520
76.75DEF3.0	76x50	0.70	76MM DEFLECTION TRACK	3000	10	100	325
76.75ST2.7	76x35	0.75	76MM STUD	2700	10	100	265
76.75ST3.0	76x35	0.75	76MM STUD	3000	10	100	294
76.75ST3.6	76x35	0.75	76MM STUD	3600	10	100	353
76.75ST4.2	76x35	0.75	76MM STUD	4200	10	100	412
76.75ST4.8	76x35	0.75	76MM STUD	4800	10	100	471
76.75ST6.0	76x35	0.75	76MM STUD	6000	10	100	590



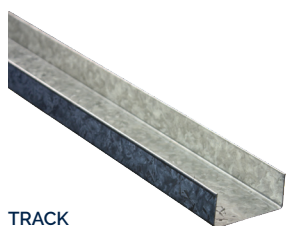
STUD

**0.70 | 0.75
GAUGE**

NOTE

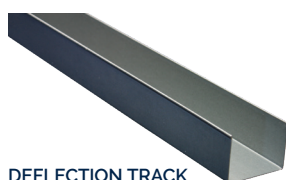
CUSTOM LENGTHS ARE AVAILABLE. SUBJECT TO MANUFACTURING LEAD TIMES.

0.70 | 0.75 STUD AND TRACK



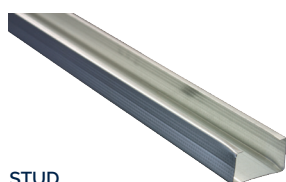
TRACK

PART	SIZE WxH	BMT	DESCRIPTION	LENGTH	SUB PACK	BULK PACK	KG/BULK PACK
92.75TR3.0	92x32	0.70	92MM TRACK	3000	10	100	290
92.75TR6.0	92x32	0.70	92MM TRACK	6000	10	100	580
92.75DEF3.0	92x50	0.70	92MM DEFLECTION TRACK	3000	10	100	360
92.75ST2.7	92x35	0.75	92MM STUD	2700	10	100	290
92.75ST3.0	92x35	0.75	92MM STUD	3000	10	100	322
92.75ST3.6	92x35	0.75	92MM STUD	3600	10	100	386
92.75ST4.2	92x35	0.75	92MM STUD	4200	10	100	451
92.75ST4.8	92x35	0.75	92MM STUD	4800	10	100	515
92.75ST6.0	92x35	0.75	92MM STUD	6000	10	100	645



DEFLECTION TRACK

PART	SIZE WxH	BMT	DESCRIPTION	LENGTH	SUB PACK	BULK PACK	KG/BULK PACK
150.75TR3.0	150x32	0.70	150MM TRACK	3000	10	100	392
150.75DEF3.0	150x50	0.70	150MM DEFLECTION TRACK	3000	10	100	400
150.75ST3.0	150x35	0.75	150MM STUD	3000	10	100	410
150.75ST3.6	150x35	0.75	150MM STUD	3600	10	100	500
150.75ST4.8	150x35	0.75	150MM STUD	4800	10	100	667
150.75ST6.0	150x35	0.75	150MM STUD	6000	10	100	833
150.75ST7.2	150x35	0.75	150MM STUD	7200	10	100	1000



STUD

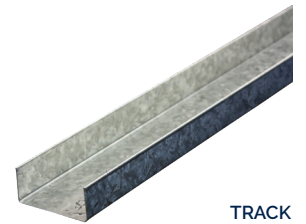
0.70 | 0.75 GAUGE

NOTE

CUSTOM LENGTHS ARE AVAILABLE. SUBJECT TO MANUFACTURING LEAD TIMES.

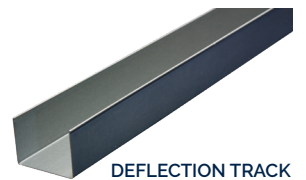
1.15 STUD AND TRACK

PART	SIZE WxH	BMT	DESCRIPTION	LENGTH	SUB PACK	BULK PACK	KG/BULK PACK
641.15TR3.0	64x32	1.15	64MM TRACK	3000	10	100	342
641.15TR6.0	64x32	1.15	64MM TRACK	6000	10	100	684
641.15DEF3.0	64x50	1.15	64MM DEFLECTION TRACK	3000	10	100	448
641.15ST2.7	64x35	1.15	64MM STUD	2700	10	100	315
641.15ST3.0	64x35	1.15	64MM STUD	3000	10	100	350
641.15ST3.6	64x35	1.15	64MM STUD	3600	10	100	420
641.15ST4.2	64x35	1.15	64MM STUD	4200	10	100	490
641.15ST4.8	64x35	1.15	64MM STUD	4800	10	100	560
641.15ST6.0	64x35	1.15	64MM STUD	6000	10	100	700



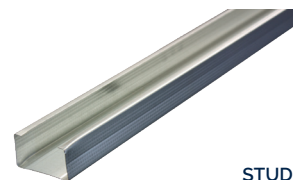
TRACK

PART	SIZE WxH	BMT	DESCRIPTION	LENGTH	SUB PACK	BULK PACK	KG/BULK PACK
761.15TR3.0	76x32	1.15	76MM TRACK	3000	10	100	382
761.15TR6.0	76x32	1.15	76MM TRACK	6000	10	100	765
761.15DEF3.0	76x50	1.15	76MM DEFLECTION TRACK	3000	10	100	487
761.15ST2.7	76x35	1.15	76MM STUD	2700	10	100	388
761.15ST3.0	76x35	1.15	76MM STUD	3000	10	100	431
761.15ST3.6	76x35	1.15	76MM STUD	3600	10	100	517
761.15ST4.2	76x35	1.15	76MM STUD	4200	10	100	603
761.15ST4.8	76x35	1.15	76MM STUD	4800	10	100	690
761.15ST6.0	76x35	1.15	76MM STUD	6000	10	100	862
761.15ST7.2	76x35	1.15	76MM STUD	7200	10	100	1035



DEFLECTION TRACK

PART	SIZE WxH	BMT	DESCRIPTION	LENGTH	SUB PACK	BULK PACK	KG/BULK PACK
921.15TR3.0	92x32	1.15	92MM TRACK	3000	10	100	421
921.15TR6.0	92x32	1.15	92MM TRACK	6000	10	100	842
921.15DEF3.0	92x50	1.15	92MM DEFLECTION TRACK	3000	10	100	540
921.15ST2.7	92x35	1.15	92MM STUD	2700	10	100	430
921.15ST2.8	92x35	1.15	92MM STUD	2800	10	100	440
921.15ST3.0	92x35	1.15	92MM STUD	3000	10	100	477
921.15ST3.6	92x35	1.15	92MM STUD	3600	10	100	573
921.15ST4.2	92x35	1.15	92MM STUD	4200	10	100	668
921.15ST4.8	92x35	1.15	92MM STUD	4800	10	100	764
921.15ST6.0	92x35	1.15	92MM STUD	6000	10	100	955
921.15ST7.2	92x35	1.15	92MM STUD	7200	10	100	1146



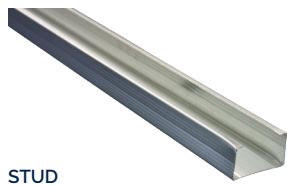
STUD

NOTE

CUSTOM LENGTHS AND 150BMT STUD AND TRACK IS AVAILABLE AS A CUSTOM MADE ITEM. MINIMUM QUANTITIES AND MANUFACTURING LEAD TIMES APPLY.

**1.15
GAUGE**

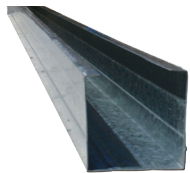
1.15 STUD AND TRACK



STUD

PART	SIZE WxH	BMT	DESCRIPTION	LENGTH	SUB PACK	BULK PACK	KG/BULK PACK
1501.15TR3.0	150x32	1.15	150MM TRACK	3000	10	100	600
1501.15DEF3.0	150x50	1.15	150MM DEFLECTION TRACK	3000	10	100	654
1501.15ST3.0	150x35	1.15	150MM STUD	3000	10	100	640
1501.15ST3.6	150x35	1.15	150MM STUD	3600	10	100	785
1501.15ST4.8	150x35	1.15	150MM STUD	4800	10	100	1046
1501.15ST6.0	150x35	1.15	150MM STUD	6000	10	100	1308
1501.15ST7.2	150x35	1.15	150MM STUD	7200	10	100	1570

INTELLIJAMB® EXTERNAL FRAMING SYSTEM



INTELLIJAMB®

PART	SIZE WxH	BMT	DESCRIPTION	LENGTH	SUB PACK	BULK PACK	KG/BULK PACK
641.15JS3.0	64x64	1.15	INTELLIJAMB® STUD	3000	10	50	325
641.15JS4.8	64x64	1.15	INTELLIJAMB® STUD	4800	10	50	396
761.15JS ^N	76x76	1.15	INTELLIJAMB® STUD	CUSTOM	10	50	417
921.15JS3.0	92x92	1.15	INTELLIJAMB® STUD	3000	10	50	459
921.15JS3.6	92x92	1.15	INTELLIJAMB® STUD	3600	10	50	459
921.15JS4.8	92x92	1.15	INTELLIJAMB® STUD	4800	10	50	459
1501.15JS ^N	150x92	1.15	INTELLIJAMB® STUD	CUSTOM	10	50	501

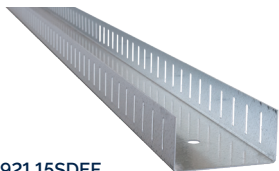
OUR NEW INTELLIJAMBS® ARE NOW BOXABLE!

NOTE

CUSTOM LENGTHS FOR ALL SIZES AVAILABLE ON REQUEST. LEAD TIMES APPLY.

SLOTTED DEFLECTION HEAD TRACK

0.75



921.15SDEF

PART	SIZE WxH	BMT	DESCRIPTION	LENGTH	SUB PACK	BULK PACK	KG/BULK PACK
51.75SDEF3.0 ^N	51x50	0.75	SLOTTED DEFLECTION HEAD TRACK	3000	10	100	260
64.75SDEF3.0 ^N	64x50	0.75	SLOTTED DEFLECTION HEAD TRACK	3000	10	100	305
76.75SDEF3.0 ^N	76x50	0.75	SLOTTED DEFLECTION HEAD TRACK	3000	10	100	449
92.75SDEF3.0 ^N	92x50	0.75	SLOTTED DEFLECTION HEAD TRACK	3000	10	100	498
150.75SDEF3.0 ^N	150x50	0.75	SLOTTED DEFLECTION HEAD TRACK	3000	10	100	529

1.15

PART	SIZE WxH	BMT	DESCRIPTION	LENGTH	SUB PACK	BULK PACK	KG/BULK PACK
641.15SDEF3.0	64x50	1.15	SLOTTED DEFLECTION HEAD TRACK	3000	10	100	469
761.15SDEF3.0	76x50	1.15	SLOTTED DEFLECTION HEAD TRACK	3000	10	100	498
921.15SDEF3.0	92x50	1.15	SLOTTED DEFLECTION HEAD TRACK	3000	10	100	529
1501.15SDEF3.0	150x50	1.15	SLOTTED DEFLECTION HEAD TRACK	3000	10	100	676

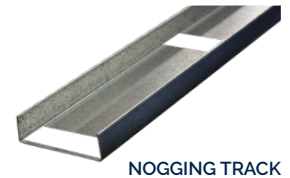
NOTE

*NON-STOCK ITEMS ARE SUBJECT TO LEAD TIMES.

NOGGINGS

PART	SIZE WxH	BMT	DESCRIPTION	CENTRES MM	LENGTH	PACK SIZE	KG/BULK PACK
51NOGTR450	51x35	0.50	51MM NOGGING TRACK	450	3680	10 100	172
51NOGTR600	51x35	0.50	51MM NOGGING TRACK	600	3680	10 100	172
64NOGTR450	64x35	0.70	64MM NOGGING TRACK	450	3680	10 100	257
64NOGTR600	64x35	0.70	64MM NOGGING TRACK	600	3680	10 100	257
76NOGTR450	76x35	0.70	76MM NOGGING TRACK	450	3680	10 100	281
76NOGTR600	76x35	0.70	76MM NOGGING TRACK	600	3680	10 100	281
92NOGTR450	92x35	0.70	92MM NOGGING TRACK	450	3680	10 100	309
92NOGTR600	92x35	0.70	92MM NOGGING TRACK	600	3680	10 100	309
150NOGTR450	150x35	0.70	150MM NOGGING TRACK	450	3680	10 100	433
150NOGTR600	150x35	0.70	150MM NOGGING TRACK	600	3680	10 100	433

0.70



NOGGING TRACK

PART	SIZE WxH	BMT	DESCRIPTION	CENTRES MM	LENGTH	PACK SIZE	KG/BULK PACK
641.15NOGTR600	64x35	1.15	64MM NOGGING TRACK	600	3680	10 100	340
761.15NOGTR600	76x35	1.15	76MM NOGGING TRACK	600	3680	10 100	382
921.15NOGTR600	92x35	1.15	92MM NOGGING TRACK	600	3680	10 100	421
1501.15NOGTR600	150x35	1.15	150MM NOGGING TRACK	600	3680	10 100	538

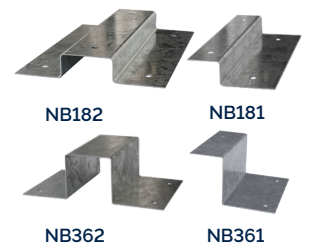
1.15

NOTE

300MM AND OTHER CUSTOM CENTRES AVAILABLE ON REQUEST. CUSTOM LENGTHS AVAILABLE. MINIMUM QUANTITIES AND MANUFACTURING LEAD TIMES APPLY.

NOGGING BRACKETS

PART	SIZE WxH	BMT	DESCRIPTION	PACK SIZE	KG/BULK PACK
NB182	120x18	0.75	18MM INTERMEDIATE NOGGING BRACKET	100	13
NB181	78x18	0.75	18MM END NOGGING BRACKET	100	7
NB362	120x36	0.75	36MM INTERMEDIATE NOGGING BRACKET	100	10
NB361	78x36	0.75	36MM END NOGGING BRACKET	100	4



NB182

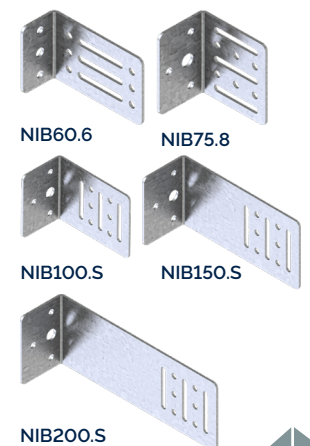
NB181

NB362

NB361

GENERAL PURPOSE BRACKETS

PART	SIZE WxH	BMT	DESCRIPTION	PACK SIZE	KG/BULK PACK
NIB60.6	60x90x30	2.4	SLOTTED INTELLIBRACKET	100	13.0
NIB75.8 ^N	75x65x45	2.4	SLOTTED INTELLIBRACKET	100	16.0
NIB100.S	75x100x45	1.9	SLOTTED INTELLIBRACKET FOR HORIZONTAL INSTALLATION (VERTICAL DEFLECTION)	100	18.2
NIB150.S	75x150x45	1.9	SLOTTED INTELLIBRACKET FOR HORIZONTAL INSTALLATION (VERTICAL DEFLECTION)	100	20.2
NIB200.S	75x200x45	1.9	SLOTTED INTELLIBRACKET FOR HORIZONTAL INSTALLATION (VERTICAL DEFLECTION)	100	21.8



NIB60.6

NIB75.8

NIB100.S

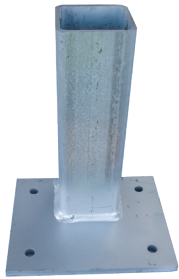
NIB150.S

NIB200.S

NOTE

^NNIB92.1 ARE NOW OBSOLETE. NIB75.8 IS ITS NEW EQUIVALENT. CUSTOM MADE GP BRACKETS ARE SUBJECT TO LEAD TIMES.

SUPPORT POST



PART	SIZE WxH	BMT	DESCRIPTION	LENGTH	KG / BULK PACK
5SSP12-300 ^N	230x170	5	DURAGAL SILL SUPPORT POST	300	7.25
5SSP12-450 ^N	230x170	5	DURAGAL SILL SUPPORT POST	450	9.13
5SSP12-600 ^N	230x170	5	DURAGAL SILL SUPPORT POST	600	11
5SSP12-900 ^N	230x170	5	DURAGAL SILL SUPPORT POST	900	14.75
5SSP12-1200 ^N	230x170	5	DURAGAL SILL SUPPORT POST	1200	18.5

NOTE

^NNON-STOCK ITEMS ARE MADE TO ORDER AND SUBJECT TO LEAD TIMES. CUSTOM DESIGNS ARE AVAILABLE UPON REQUEST.

ANGLES



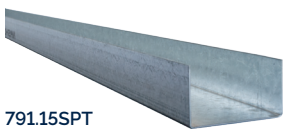
HA90



SA7550

PART	SIZE WxH	BMT	DESCRIPTION	LENGTH	SUB PACK	BULK PACK	KG/BULK PACK
BA9024	30x30	0.40	BACKING ANGLE	2400	20	500	242
BA9027	30x30	0.40	BACKING ANGLE	2700	20	500	272
BA9030	30x30	0.40	BACKING ANGLE	3000	20	500	302
HA90	35x35	0.70	ANGLE	3600	10	500	750
LA90	50x50	0.70	ANGLE	3600	10	500	1114
34341.15AN3.0	34x34	1.15	ANGLE	3000	10	500	1850
XHLA90	50x50	1.15	ANGLE	3000	10	500	1423
SA5035.753.0	50x35	0.75	SLOTTED ANGLE (SUITS SHAFTLINER)	3000	10	-	20.5
SA5050.752.4	50x50	0.75	SLOTTED ANGLE (SUITS HEBEL® PANELS)	2400	10	-	14.9
SA5050.753.0	50x50	0.75	SLOTTED ANGLE (SUITS HEBEL® PANELS)	3000	10	-	18.6
SA50501.153.0	50x50	1.15	SLOTTED ANGLE (SUITS HEBEL® PANELS)	3000	10	-	26.9
SA75501.153.0	75x50	1.15	SLOTTED ANGLE (SUITS HEBEL® PANELS)	3000	10	-	31

TRACK TO SUIT SPEED PANEL®



791.15SPT

PART	SIZE WxH	BMT	DESCRIPTION	LENGTH	SUB PACK	BULK PACK	KG / BULK PACK
511.15SPT6.0 ^N	51X50	1.15	51MM SPEED PANEL TRACK	6000	10	100	850
641.15SPT3.0 ^N	64X50	1.15	64MM SPEED PANEL TRACK	3000	10	100	450
791.15SPT3.0	79x50	1.15	79MM SPEED PANEL TRACK	3000	10	100	480
791.15SPT6.0	79x50	1.15	79MM SPEED PANEL TRACK	6000	10	100	970

NOTE

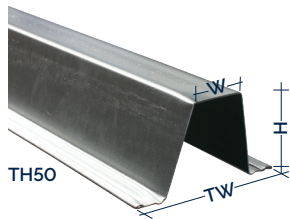
^NMAY BE SUBJECT TO LEAD TIMES.



CLADDING SYSTEMS

nashco.com.au 28 Carrington St Queanbeyan, NSW 2620 P 02 6124 3400 E support@nashco.com.au

TOP HAT ROOF BATTEN

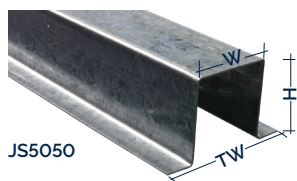


PART	SIZE TWxHxW	BMT	DESCRIPTION	LENGTH	PACK SIZE	KG/BULK PACK
TH2561	65x22x35	0.42	22MM CEILING BATTEN	6100	10 200	464
TH4065	90x40x45	0.48	40MM ROOF BATTEN	6500	150	669
TH50.757.5	101x50x33	0.75	50MM TOP HAT ROOF BATTEN	7500	50	418
TH64.756.0	104x64x32	0.75	64MM TOP HAT ROOF BATTEN	6000	50	368
TH64.757.5	104x64x32	0.75	64MM TOP HAT ROOF BATTEN	7500	50	483
TH64.957.5	104x64x32	0.95	64MM TOP HAT ROOF BATTEN	7500	50	606
TH75.757.5	112x75x34	0.75	75MM TOP HAT ROOF BATTEN	7500	30	326
TH75.957.5	112x75x34	0.95	75MM TOP HAT ROOF BATTEN	7500	30	407
TH96.757.5	128x96x37	0.75	96MM TOP HAT ROOF BATTEN	7500	30	399
TH96.957.5	128x96x37	0.95	96MM TOP HAT ROOF BATTEN	7500	30	500
TH120.757.5	159x120x44	0.75	120MM TOP HAT ROOF BATTEN	7500	20	334
TH120.957.5 ^N	159x120x44	0.95	120MM TOP HAT ROOF BATTEN	7500	20	418

NOTE | MAY BE SUBJECT TO LEAD TIMES.

NOTE | 1.15BMT AND CUSTOM LENGTHS ARE AVAILABLE. MINIMUM QUANTITIES AND MANUFACTURING LEAD TIMES APPLY.

TOP HAT JUNCTION STUD [FAÇADE TOP HAT]

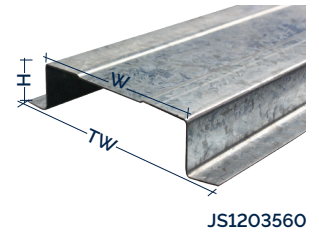
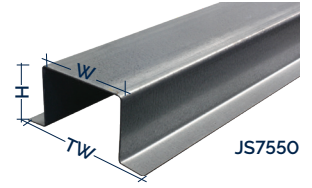


PART	SIZE WxHxTW	BMT	DESCRIPTION	LENGTH	PACK SIZE	KG/BULK PACK
JS5015.756.0 ^N	50x15x90	0.75	TOP HAT JUNCTION STUD	6000	50	342
JS5024.756.0 ^N	50x24x90	0.75	TOP HAT JUNCTION STUD	6000	50	354
JS5035.756.0 ^N	50x35x86	0.75	TOP HAT JUNCTION STUD	6000	50	405
JS5050.756.0 ^N	50x50x86	0.75	TOP HAT JUNCTION STUD	6000	50	490

NOTE | 0.75 BMT TOP HAT JUNCTION STUDS MAY BE SUBJECT TO LEAD TIMES.

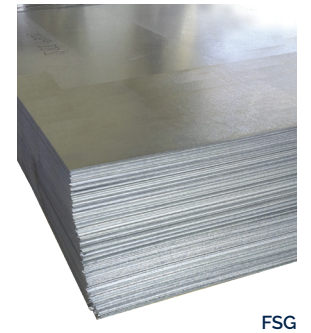
TOP HAT JUNCTION STUD [FAÇADE TOP HAT]

PART	SIZE WxHxTW	BMT	DESCRIPTION	LENGTH	PACK SIZE	KG/BULK PACK
JS501536	50x15x78	1.15	TOP HAT JUNCTION STUD	3600	50	162
JS501560	50x15x78	1.15	TOP HAT JUNCTION STUD	6000	50	270
JS751560	75x15x105	1.15	TOP HAT JUNCTION STUD	6000	50	342
JS502460	50x24x86	1.15	TOP HAT JUNCTION STUD	6000	50	342
JS752460	75x24x109	1.15	TOP HAT JUNCTION STUD	6000	50	405
JS503560	50x35x88	1.15	TOP HAT JUNCTION STUD	6000	50	405
JS503572	50x35x88	1.15	TOP HAT JUNCTION STUD	7200	50	486
JS753560	75x35x115	1.15	TOP HAT JUNCTION STUD	6000	50	477
JS505060	50x50x84	1.15	TOP HAT JUNCTION STUD	6000	50	490
JS755060	75x50x115	1.15	TOP HAT JUNCTION STUD	6000	50	560
JS1203560	120x35x162	1.15	TOP HAT JUNCTION STUD [RECESS FOR FOAM TAPE]	6000	50	600



PART	WIDTH	BMT	DESCRIPTION	LENGTH	PACK SIZE	KG/BULK PACK
FSG.501224 ^N	1220	0.50	GALVANISED FLATSHEET BACKPAN	2440	1	12.55
FSG.501230	1220	0.50	GALVANISED FLATSHEET BACKPAN	3050	1	15.68
FSG.701224 ^N	1220	0.70	GALVANISED FLATSHEET BACKPAN	2440	1	17.22
FSG.701230	1220	0.70	GALVANISED FLATSHEET BACKPAN	3050	1	21.53
FSG.901230	1220	0.90	GALVANISED FLATSHEET BACKPAN	3050	1	27.36
FSG1.101224 ^N	1220	1.10	GALVANISED FLATSHEET BACKPAN	2440	1	26.55
FSG1.101230	1220	1.10	GALVANISED FLATSHEET BACKPAN	3050	1	33.24
FSG1.501230	1220	1.50	GALVANISED FLATSHEET BACKPAN	3050	1	44.89
FSG1.901230	1220	1.90	GALVANISED FLATSHEET BACKPAN	3050	1	56.58
FSG2.401230	1220	2.40	GALVANISED FLATSHEET BACKPAN	3050	1	71.18
FSG2.901230	1220	2.90	GALVANISED FLATSHEET BACKPAN	3050	1	85.79

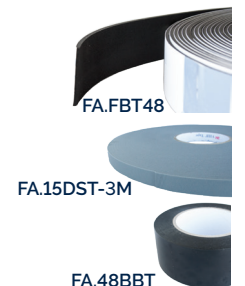
FLAT SHEET



NOTE | SEE FLATSHEET AND PROCESSING IP 32| FURTHER GAUGES AND SIZES ON REQUEST.

ACCESSORIES

PART	SIZE WxH	DESCRIPTION	LENGTH	PACK SIZE	KG/BULK PACK
FA.FBT48	48x3.0	48MMx3.0MM FAÇADE BACKING TAPE	25M	10	-
FA.FBT15 ^N	15x3.0	15MMx3.0MM FAÇADE BACKING TAPE	25M	10	-
FA.15DST-3M	15x1.6	DOUBLE SIDED TAPE 15MM	33M	14	-
FA.18DST-3M	18x1.6	DOUBLE SIDED TAPE 18MM	33M	12	-
FA.48BBT	W48	BOND BREAKER TAPE	66M	12	-



NOTE | MAY BE SUBJECT TO LEAD TIMES.

FAÇADE TOP HAT BRACKETS



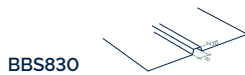
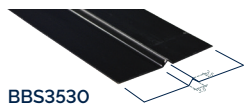
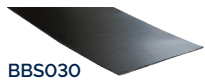
PART	SIZE WxH	BMT	DESCRIPTION	LENGTH	PACK SIZE	KG/BULK PACK
N524	50x24	1.9	FAÇADE TOP HAT BRACKET	98	100	15.4
N535	50x35	1.9	FAÇADE TOP HAT BRACKET	98	100	15.4
N550	50x50	1.9	FAÇADE TOP HAT BRACKET	98	100	19.8
N575	50x75	1.9	FAÇADE TOP HAT BRACKET	98	100	28.8
N5100	50x100	1.9	FAÇADE TOP HAT BRACKET	98	100	36.6

NOTE | FAÇADE TOP HAT BRACKETS NEED TO BE FIXED TO TOP HAT JUNCTION STUDS WITH 12x20 HEX HEAD DRILL POINT TEKS.. REFER TO PAGE 51

NOTE | FOR PACKERS REFER TO PAGE 53.

NOTE | CUSTOM SIZES AVAILABLE. MANUFACTURING LEAD TIMES APPLY.

FAÇADE BACKING STRIP



PART	SIZE WxH	BMT	DESCRIPTION	LENGTH	PACK SIZE	KG/BULK PACK
BBS030	70	0.55	BLACK FAÇADE BACKING STRIP FLAT	2990	10	8.37
BBS3530	67x3.5	0.55	BLACK FAÇADE BACKING STRIP 3.5MM	2990	10	8.37
BBS830 ^N	67x8.0	0.55	BLACK FAÇADE BACKING STRIP 8MM	2990	10	8.37

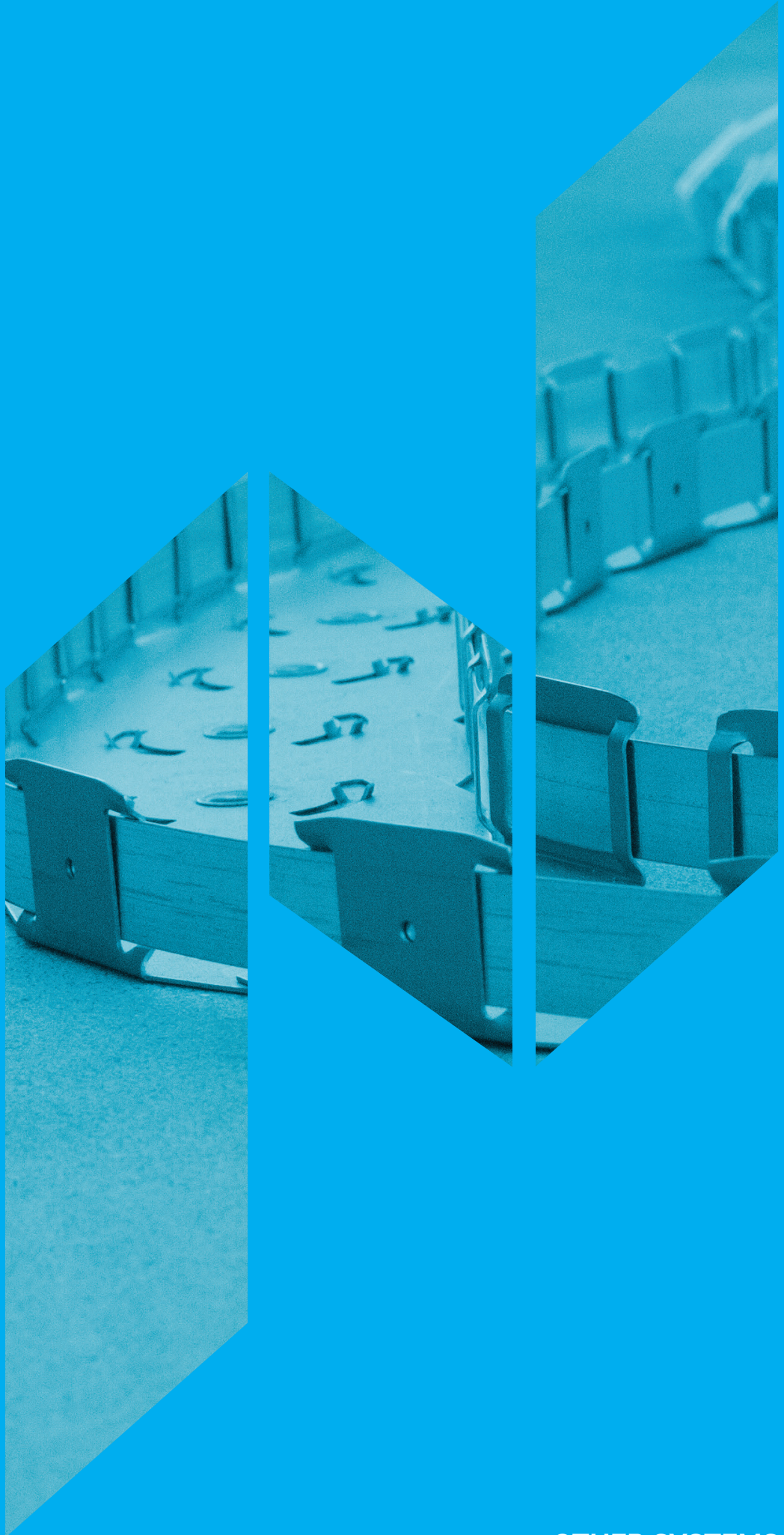
NOTE | MINIMUM QUANTITIES AND MANUFACTURING LEAD TIMES APPLY.

SLOTTED ANGLE



PART	SIZE WxH	BMT	DESCRIPTION	LENGTH	PACK SIZE	KG/BULK PACK
SA5035.753.0	50x35	0.75	SLOTTED ANGLE (SUITS SHAFTLINER)	3000	10	20.5
SA5050.752.4	50x50	0.75	SLOTTED ANGLE (SUITS HEBEL® PANELS)	2400	10	14.9
SA5050.753.0	50x50	0.75	SLOTTED ANGLE (SUITS HEBEL® PANELS)	3000	10	18.6
SA50501.153.0	50x50	1.15	SLOTTED ANGLE (SUITS HEBEL® PANELS)	3000	10	26.9
SA75501.153.0	75x50	1.15	SLOTTED ANGLE (SUITS HEBEL® PANELS)	3000	10	31

NOTE | CUSTOM LENGTHS AND NON-STOCK ITEMS ARE AVAILABLE . MINIMUM QUANTITIES AND MANUFACTURING LEAD TIMES APPLY.



OTHER SYSTEMS

nashco.com.au 28 Carrington St Queanbeyan, NSW 2620 P 02 6124 3400 E support@nashco.com.au

ACOUSTIC SOUND ISOLATION SYSTEM



N237R



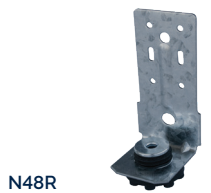
N237TR



NDFR



N96R



N48R



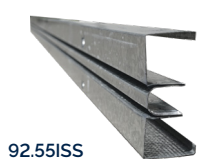
1050-BLK



N24R



N126



92.55ISS

PART	DESCRIPTION	HEIGHT IN ASSEMBLY	SUB PACK	BULK PACK	KG / BULK PACK
N237R	RESILIENT N237 CLIP	15	100	100	3.6
N237TR	RESILIENT FC TO TCR COUPLING	15	50	50	3.8
NDFR	RESILIENT NDF CLIP	13-23	100	100	4.3
N96R	RESILIENT N237 CLIP WITH 90° BRACKET	110	50	50	5.4
N48R	RESILIENT 90° BRACKET	55	100	100	6.9
1050-BLK	ACOUSTIC ISOLATION HANGER 54KG	86	100	100	4.2
N24R	RESILIENT INLINE BRACKET	100	30	30	4.8
N126	STAGGERED STUD CLIP	-	100	500	10

LENGTHS

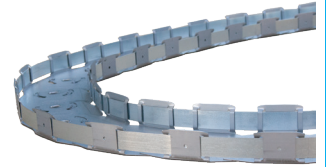
92.55ISS	92MM 0.55 BMT NASHCO INTELLISOUND® STUD (60 PACK)	2900	3200	3800	6000
----------	---	------	------	------	------

PART	DESCRIPTION FOR APPLICATIONS
N237R	THESE BRACKETS SUSPEND FURRING CHANNELS IN A VARIETY OF APPLICATIONS, INCLUDING DIRECT FIX, BELOW PURLINS OR TRUSSES, OR OFF TOP CROSS RAIL. THESE RESILIENT MOUNTS REDUCE AIRBORNE NOISE AND STRUCTURE-BOURNE VIBRATION IN SENSITIVE WALL AND CEILING APPLICATIONS. SUITS N29 AND N08 FURRING CHANNELS.
N237TR	
NDFR	
N96R	
N48R	A VERSATILE RESILIENT MOUNT IS USED IN MANY APPLICATIONS WHERE WALLS AND CEILINGS NEED TO BE ACOUSTICALLY ISOLATED.
1050-BLK	1050 RESILIENT HANGER IS USED IN A HANGING ROD APPLICATION WHERE CEILINGS NEED ACOUSTIC ISOLATION
N24R	AN ENGINEERED, RESILIENT BRACKET FOR REDUCING AIRBORNE NOISE AND STRUCTURE-BOURNE VIBRATION IN INTERNAL CHASE WALL APPLICATIONS, WHERE ACOUSTICAL BRIDGING IS REQUIRED. THIS BRACKET ALLOWS BOTH WALLS TO SUPPORT EACH OTHER WHILST REMAINING COMPLETELY ACOUSTICALLY ISOLATED.
N126	THE N126 IS A STAGGERED STUD CLIP USED IN STAGGERED STUD WALLS TO HOLD THE STUDS TO ONE SIDE OF THE TRACK.
92.55ISS	NASHCO INTELLISOUND® STUD IS OFTEN USED FOR INTERTENANCY WALLS AS WELL AS STUD WALLS WITH ACOUSTIC RATING.
NOTE	NON-STOCK ITEMS AVAILABLE. MINIMUM QUANTITIES AND MANUFACTURING LEAD TIMES APPLY.

FLEXIBLE TRACK AND PREFABRICATION

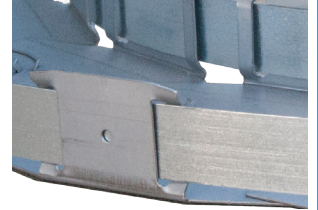
FLEX-C TRAC™

PART	BMT	DESCRIPTION	LENGTH	PACK SIZE	KG/BULK PACK
FT64	0.75	64MM FLEX-C TRAC™	3000	10	34
FT76	0.75	76MM FLEX-C TRAC™	3000	10	34
FT92	0.75	92MM FLEX-C TRAC™	3000	10	38



FT92

PART	BMT	DESCRIPTION FOR APPLICATIONS
FT64	0.75	FLEX-C™ TRAC IS A FLEXIBLE TRACK AVAILABLE IN 64MM, 76MM AND 92MM WIDTH WHICH WILL BEND TO ANY RADIUS GREATER THAN 200MM.
FT76		FLEX-C TRAC™s UNIQUE PIVOTAL DESIGN ALLOWS UNIFORM CURVES WITH THE PROVISION OF SLIDING STRAPS WITH SCREW HOLES FOR LOCKING THE TRACK TO THE DESIRED SHAPE. THIS MAKES THE PRODUCT IDEAL FOR BULKHEADS.
FT92		



PRECURVED TRACK

PREFABRICATION

PART	DESCRIPTION FOR APPLICATIONS
C-CURTTTR0.55	PRECURVED TRACK AND STUD MODULAR BULKHEADS TRUSSES BARREL VAULTS FAÇADES
C-CURTTTR0.70	
C-CURTTTR1.15	



VIBE HOTEL CANBERRA



ERINA FAIR GOSFORD

CUSTOM ORDERS



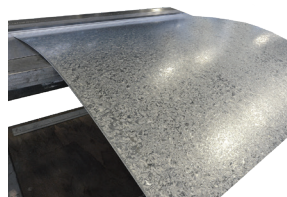
ALL ORDER FORMS CAN BE FOUND HERE: nashco.com.au/resources/forms/
MORE RELATED INFORMATION AND SERVICES CAN BE FOUND UNDER RESOURCES

FLATSHEET AND PROCESSING

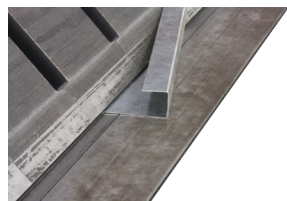


FLAT SHEET

FLAT SHEET



GUILLOTINING SERVICES



FOLDING SERVICES

PART	DESCRIPTION FOR APPLICATIONS
FLAT SHEET	A VARIETY OF SIZES, GAUGES, GRADES AND COATINGS ARE AVAILABLE ON REQUEST. ITEMS MAY BE SUBJECT TO LEAD TIME.
GUILLOTINING	A RANGE OF MATERIALS INCLUDING GALVANISED, COLORBOND® AND ZINCALUME® ARE READILY AVAILABLE. REFER TO PAGE 27 FOR STOCK SIZES. NASHCO PROVIDES CUSTOM GUILLOTINING AND FOLDING SOLUTIONS.
FOLDING AND BRAKE PRESSING	CONTACT US TO DISCUSS YOUR REQUIREMENTS.

DOMESTIC FRAME BRACING



ANGLE BRACE



RB60



SB39

BRACES

PART	DESCRIPTION	LENGTH	PACK SIZE	BULK PACK	KG BULK PACK
AB30	0.9MM ANGLE BRACE	3000	10	250	196
AB33	0.9MM ANGLE BRACE	3300	10	250	215
AB36	0.9MM ANGLE BRACE	3600	10	250	236
AB42	0.9MM ANGLE BRACE	4200	10	250	276
AB48	0.9MM ANGLE BRACE	4800	10	250	315
RB60	ROOF BRACE	6000	8	480	805
SB39	STRAP BRACE 30MM x 1.0BMT	3900	8	500 1000	1000



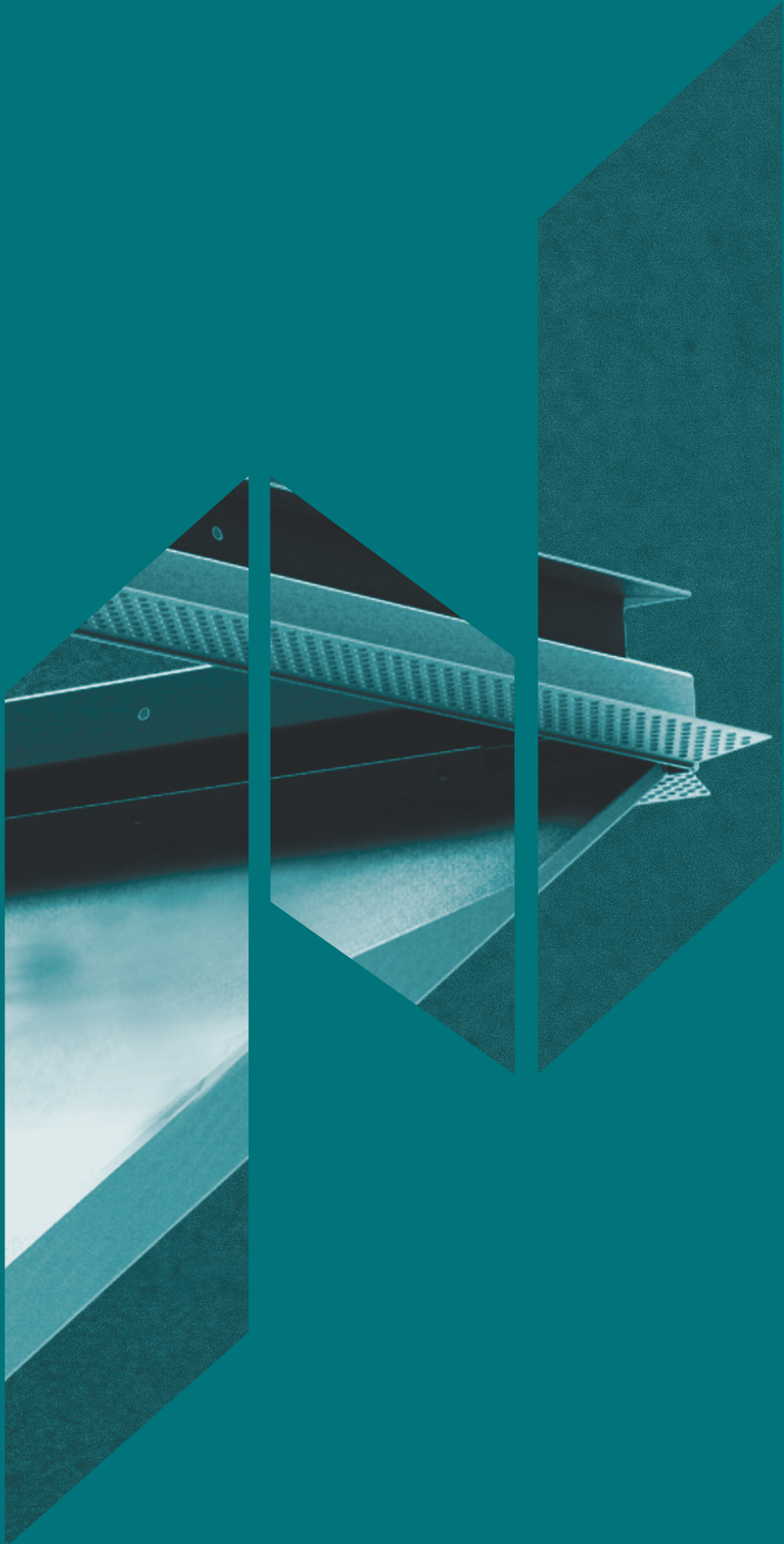
HP30



SBT

HOOP IRON

PART	DESCRIPTION	LENGTH	PACK SIZE	KG/PACK
HP30	30MM HOOP IRON x 0.80BMT	30000	1	5.2
SBT	HOOP IRON TENSIONER	-	250	12



ACCESS PANELS

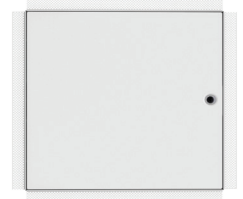
nashco.com.au 28 Carrington St Queanbeyan, NSW 2620 P 02 6124 3400 E support@nashco.com.au

ACCESS PANELS

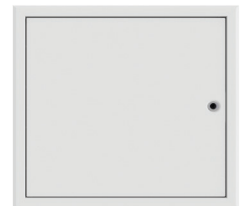
	PART	DESCRIPTION
 MTL.SL	MTL.SL	ACCESS PANELS WITH METAL DOOR - SQUARE LOCK
 MTLA	MTLA	ACCESS PANELS WITH METAL DOOR - ACOUSTIC RW34 RATING
 MTL.CL	MTL.CL	ACCESS PANELS WITH METAL DOOR - BUDGET
 MDF	MDF	ACCESS PANELS WITH MDF DOOR
 MDFA	MDFA	ACCESS PANELS WITH MDF DOOR - ACOUSTIC RW31 RATING
 1HR	FIRE RATED	2 HOUR FIRE RATED ACCESS PANELS
 KMH KAP	PLASTIC	PLASTIC MANHOLE FRAME PLASTIC SNAP IN ACCESS PANEL
 TPMTL	TILEABLE	TILEABLE ACCESS PANELS
 TOUCH LATCH	TOUCH LATCH	TOUCH LATCH METAL DOOR TOUCH LATCH MDF DOOR
 SECURITY	SECURITY [CUSTOM]	SECURITY ACCESS PANELS - CUSTOM ORDER
 SS	STAINLESS [CUSTOM]	STAINLESS STEEL ACCESS PANELS - CUSTOM ORDER
 CUSTOM	SPECIALTY [CUSTOM]	SPECIAL SIZE SPECIAL DESIGN SPECIAL RATINGS DOUBLE DOOR UPWARD OPENING LOCK OPTIONS KEY LATCH SHORT LEAD TIME

PREMIUM METAL DOOR ACCESS PANELS | SQUARE LOCK

PART	DESCRIPTION	SIZE MM	MAX CUT OUT SIZE
SETBEAD METAL DOOR ACCESS PANELS			
2020SBMTL.SL	SETBEAD ACCESS PANEL METAL DOOR SQUARE LOCK	200x200	205x205
3030SBMTL.SL	SETBEAD ACCESS PANEL METAL DOOR SQUARE LOCK	300x300	305x305
4040SBMTL.SL	SETBEAD ACCESS PANEL METAL DOOR SQUARE LOCK	400x400	405x405
4545SBMTL.SL	SETBEAD ACCESS PANEL METAL DOOR SQUARE LOCK	450x450	455x455
5555SBMTL.SL	SETBEAD ACCESS PANEL METAL DOOR SQUARE LOCK	550x550	555x555
6045SBMTL.SL	SETBEAD ACCESS PANEL METAL DOOR SQUARE LOCK	600x450	605x455
FLANGED METAL DOOR ACCESS PANELS			
2020FLMTL.SL	FLANGED ACCESS PANEL METAL DOOR SQUARE LOCK	200x200	205x205
3030FLMTL.SL	FLANGED ACCESS PANEL METAL DOOR SQUARE LOCK	300x300	305x305
4040FLMTL.SL	FLANGED ACCESS PANEL METAL DOOR SQUARE LOCK	400x400	405x405
4545FLMTL.SL	FLANGED ACCESS PANEL METAL DOOR SQUARE LOCK	450x450	455x455
5555FLMTL.SL	FLANGED ACCESS PANEL METAL DOOR SQUARE LOCK	550x550	555x555
6045FLMTL.SL	FLANGED ACCESS PANEL METAL DOOR SQUARE LOCK	600x450	605x455



SBMTL.SL

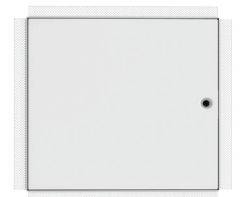


FLMTL.SL

NOTE | 600x600 ACCESS PANEL AVAILABLE. LEAD TIMES MAY APPLY.

METAL DOOR ACOUSTIC ACCESS PANELS

PART	DESCRIPTION	SIZE MM	MAX CUT OUT SIZE
SETBEAD METAL ACOUSTIC DOOR ACCESS PANELS			
3030SBMTLA	SETBEAD RW34 ACOUSTIC ACCESS PANEL	300x300	305x305
4545SBMTLA	SETBEAD RW34 ACOUSTIC ACCESS PANEL	450x450	455x455
5555SBMTLA	SETBEAD RW34 ACOUSTIC ACCESS PANEL	550x550	555x555
FLANGED METAL ACOUSTIC DOOR ACCESS PANELS			
3030FLMTLA	FLANGED RW34 ACOUSTIC ACCESS PANEL	300x300	305x305
4545FLMTLA	FLANGED RW34 ACOUSTIC ACCESS PANEL	450x450	455x455
5555FLMTLA	FLANGED RW34 ACOUSTIC ACCESS PANEL	550x550	555x555



SBMTLA



FLMTLA

BUDGET METAL DOOR ACCESS PANELS | COIN LOCK



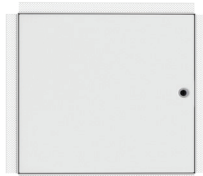
SBMTL.CL



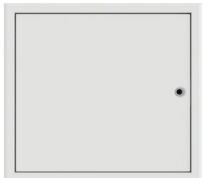
FLMTL.CL

PART	DESCRIPTION	SIZE MM	MAX CUT OUT SIZE
SETBEAD METAL DOOR ACCESS PANELS (BUDGET)			
3030SBMTL.CL	SETBEAD ACCESS PANEL METAL DOOR COIN LOCK	300x300	310x310
4545SBMTL.CL	SETBEAD ACCESS PANEL METAL DOOR COIN LOCK	450x450	460x460
5656SBMTL.CL	SETBEAD ACCESS PANEL METAL DOOR COIN LOCK	560x560	570x570
6060SBMTL.CL	SETBEAD ACCESS PANEL METAL DOOR COIN LOCK	600x600	610x610
FLANGED METAL DOOR ACCESS PANELS (BUDGET)			
3030FLMTL.CL	FLANGED ACCESS PANEL METAL DOOR COIN LOCK	300x300	310x310
4545FLMTL.CL	FLANGED ACCESS PANEL METAL DOOR COIN LOCK	450x450	460x460
5656FLMTL.CL	FLANGED ACCESS PANEL METAL DOOR COIN LOCK	560x560	570x570
6060FLMTL.CL	FLANGED ACCESS PANEL METAL DOOR COIN LOCK	600x600	610x610

MDF DOOR ACCESS PANELS



SBMDF



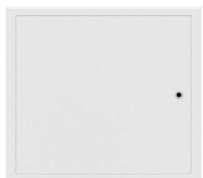
FLMDF

PART	DESCRIPTION	SIZE MM	MAX CUT OUT SIZE
SETBEAD MDF DOOR ACCESS PANELS			
3030SBMDF	SETBEAD ACCESS PANEL WITH MDF DOOR	300x300	305x305
4545SBMDF	SETBEAD ACCESS PANEL WITH MDF DOOR	450x450	455x455
5555SBMDF	SETBEAD ACCESS PANEL WITH MDF DOOR	550x550	555x555
FLANGED MDF DOOR ACCESS PANELS			
3030FLMDF	FLANGED ACCESS PANEL WITH MDF DOOR	300x300	305x305
4545FLMDF	FLANGED ACCESS PANEL WITH MDF DOOR	450x450	455x455
5555FLMDF	FLANGED ACCESS PANEL WITH MDF DOOR	550x550	555x555

MDF DOOR ACOUSTIC ACCESS PANELS



SBMDFA



FLMDFA

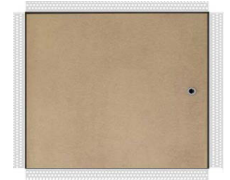
PART	DESCRIPTION	SIZE MM	MAX CUT OUT SIZE
SETBEAD MDF ACOUSTIC DOOR ACCESS PANELS			
3030SBMDFA ^N	SETBEAD RW31 ACOUSTIC ACCESS PANEL	300x300	305x305
4545SBMDFA ^N	SETBEAD RW31 ACOUSTIC ACCESS PANEL	450x450	455x455
5555SBMDFA ^N	SETBEAD RW31 ACOUSTIC ACCESS PANEL	550x550	555x555
FLANGED MDF ACOUSTIC DOOR ACCESS PANELS			
3030FLMDFA ^N	FLANGED RW31 ACOUSTIC ACCESS PANEL	300x300	305x305
4545FLMDFA ^N	FLANGED RW31 ACOUSTIC ACCESS PANEL	450x450	455x455
5555FLMDFA ^N	FLANGED RW31 ACOUSTIC ACCESS PANEL	550x550	555x555

NOTE

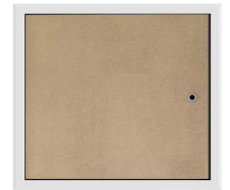
NON-STOCK ITEMS ARE SUBJECT TO MANUFACTURING LEAD TIMES.

FIRE RATED ACCESS PANELS

PART	DESCRIPTION	SIZE MM	MAX CUT OUT SIZE
SETBEAD FIRE-RATED ACCESS PANELS			
3030SBFSP	SETBEAD FYRESHIELD PLUS ACCESS PANEL	300x300	300x300
4040SBFSP	SETBEAD FYRESHIELD PLUS ACCESS PANEL	400x400	400x400
4545SBFSP	SETBEAD FYRESHIELD PLUS ACCESS PANEL	450x450	450x450
5555SBFSP	SETBEAD FYRESHIELD PLUS ACCESS PANEL	550x550	550x550
6060SBFSP	SETBEAD FYRESHIELD PLUS ACCESS PANEL	600x600	600x600
FLANGED FIRE-RATED ACCESS PANELS			
3030FLFSP	FLANGED FYRESHIELD PLUS ACCESS PANEL	300x300	300x300
4040FLFSP	FLANGED FYRESHIELD PLUS ACCESS PANEL	400x400	400x400
4545FLFSP	FLANGED FYRESHIELD PLUS ACCESS PANEL	450x450	450x450
5555FLFSP	FLANGED FYRESHIELD PLUS ACCESS PANEL	550x550	550x550
6060FLFSP	FLANGED FYRESHIELD PLUS ACCESS PANEL	600x600	600x600



SBFSP



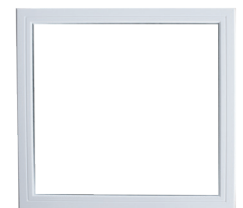
FLFSP

NOTE

1x FYREFLEX CARTRIDGE INCLUDED IN ALL FYRESHIELD PLUS ACCESS PANEL.
AVAILABLE AS SCREW FIXED OR HINGED. LEAD TIMES MAY APPLY.

PLASTIC MANHOLE FRAMES

PART	DESCRIPTION	SIZE MM	MAX CUT OUT SIZE
PLASTIC MANHOLE FRAMES			
KMH03	PLASTIC MANHOLE FRAME	450x450	443x443
KMH01	PLASTIC MANHOLE FRAME	450x600	443x553
KMH02	PLASTIC MANHOLE FRAME	600x600	553x553
KMHM03	PLASTIC MANHOLE FRAME WITH WHITE METAL DOOR	450x450	443x443
KMHM02	PLASTIC MANHOLE FRAME WITH WHITE METAL DOOR	600x600	553x553
PLASTIC SNAP IN ACCESS PANELS			
KAP02	PLASTIC SNAP IN ACCESS PANEL	155x155	155x155
KAP01	PLASTIC SNAP IN ACCESS PANEL	245x245	245x245
KAP03	PLASTIC SNAP IN ACCESS PANEL	300x300	300x300



KMH



KAP

TILEABLE ACCESS PANELS



TPMTL

PART	DESCRIPTION	SIZE MM	MAX CUT OUT SIZE
3030TPMTL	TILE ACCESS PANEL (10MM TILE + 2MM GLUE)	300x300	300x300
4545TPMTL	TILE ACCESS PANEL (10MM TILE + 2MM GLUE)	450x450	450x450
6060TPMTL	TILE ACCESS PANEL (10MM TILE + 2MM GLUE)	600x600	600x600

NOTE

STANDARD ZINCANNEAL FINISH. STAINLESS STEEL OPTION AVAILABLE. MINIMUM SIZE 150MM. OTHER CUSTOM SIZES AVAILABLE. LEAD TIMES MAY APPLY.

TOUCH LATCH ACCESS PANELS



FLMTL.TL



FLMDF.TL

PART	DESCRIPTION	SIZE RANGE	COLOUR
FLMTL.TL	FLANGED TOUCH LATCH METAL DOOR ACCESS PANELS	MIN 250MM	GREY WHITE
SBMTL.TL	SET BEAD TOUCH LATCH METAL DOOR ACCESS PANELS	MIN 250MM	GREY WHITE
FLMDF.TL	FLANGED TOUCH LATCH MDF DOOR ACCESS PANELS	MIN 300MM	GREY WHITE
SBMDF.TL	SET BEAD TOUCH LATCH MDF DOOR ACCESS PANELS	MIN 300MM	GREY WHITE

NOTE

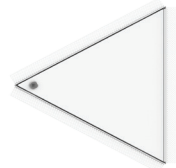
NON-STOCK ITEMS. CUSTOM SIZES AVAILABLE. SHORT LEAD TIMES APPLY.

CUSTOM ACCESS PANELS

PART	DESCRIPTION	SIZE COLOUR
SPECIAL SIZE ACCESS PANELS		
-	METAL DOOR METAL DOOR ACOUSTIC RATING MDF DOOR MDF DOOR ACOUSTIC RATING ANY LOCK OPTION (SEE PAGE 40) WALL OR CEILING INSTALLATION AVAILABLE	GREY WHITE
-	MIN SIZE 250MM FOR A LOW PROFILE (30MM)	GREY WHITE
-	OVER 600MM LARGE PROFILE (54MM)	-
ALL PANELS WILL BE MANUFACTURED 5MM SMALLER THAN THE OPENING SIZE IN WALL OR CEILING TO A TOLERANCE OF +/-2MM.		
SPECIAL DESIGN ACCESS PANELS		
-	PLEASE ENQUIRE DIRECTLY ABOUT DESIGN SOLUTIONS INCLUDING ODD SHAPES AND SIZES, FACE FIXED PANELS AND MORE.	GREY WHITE
DOUBLE DOOR ACCESS PANELS		
-	FLANGED METAL DOUBLE DOOR ACCESS PANEL	GREY WHITE
-	FLANGED METAL WIDE DOUBLE DOOR ACCESS PANEL	GREY WHITE
-	FLANGED METAL DOOR ACCESS PANEL	STAINLESS STEEL
STAINLESS STEEL DOOR ACCESS PANELS		
-	FLANGED STAINLESS STEEL DOOR ACCESS PANEL	STAINLESS STEEL
-	FLANGED STAINLESS STEEL DOUBLE DOOR ACCESS PANEL	STAINLESS STEEL
-	SET BEAD STAINLESS STEEL DOOR ACCESS PANEL	STAINLESS STEEL
-	SET BEAD STAINLESS STEEL DOUBLE DOOR ACCESS PANEL	STAINLESS STEEL
A STAINLESS STEEL SET BEAD FRAME WILL STILL BE CONSTRUCTED WITH A GALVANISED STEEL SETTING EDGE.		
KEY LATCH <small>SHORT LEAD TIME</small>		
APKL	KEY LATCH NOT INSTALLED	-
APKLI	KEY LATCH INSTALLED	-
ADDITIONAL OPTIONS		
-	UPWARD OPENING	-
-	FLANGED SECURITY PANEL, HINGED, KEY LOCK SET BEAD SECURITY PANEL, HINGED, KEY LOCK	STEEL, PRIMED



LARGE DOORS



C-AP



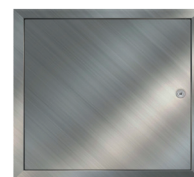
DOUBLE DOOR



DOUBLE DOOR, WIDE



STAINLESS STEEL DOUBLE DOOR



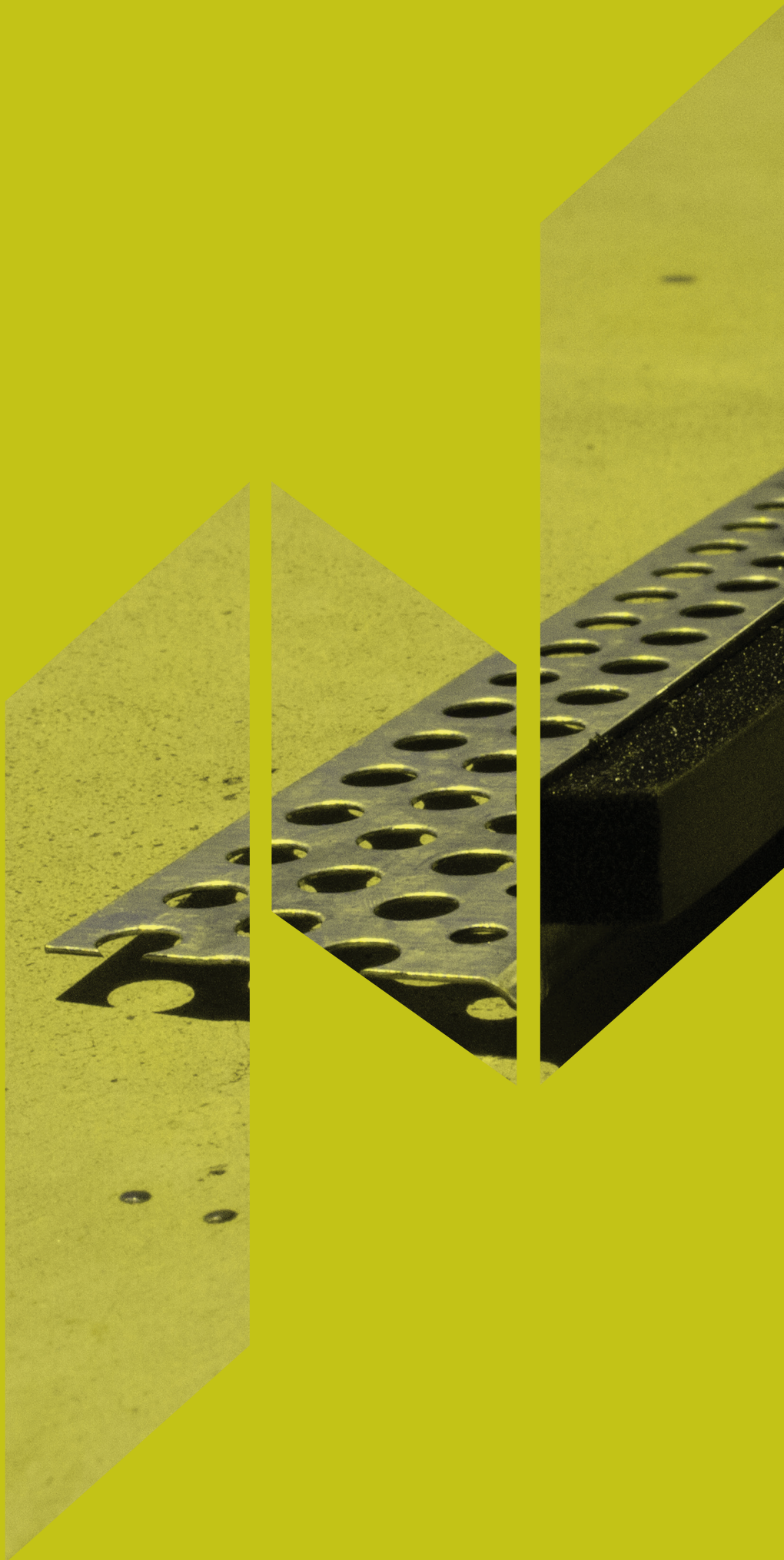
STAINLESS STEEL DOOR



SECURITY

CUSTOM ACCESS PANEL LOCKS

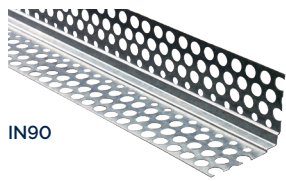
	PART	DESCRIPTION
 FIRE RATED BUDGET LOCK	APSL	FIRE RATED BUDGET LOCK
 KABA LATCH	APKABA	KABA LATCH
 LOCKWOOD 203	APL203	LOCKWOOD 203
 KEY CAM LOCK	APKL	KEY CAM LOCK
 SQUARE CAM LOCK, WHITE	APSCL	SQUARE CAM LOCK SILVER SQUARE CAM LOCK
 TOUCH LATCH	APTL	TOUCH LATCH
 APEC	APEC	ESCUTCHEON
 APSL + APEC + KEY	APSL + APEC + KEY	FOR DISPLAY PURPOSE ONLY



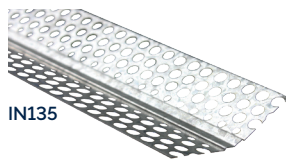
FINISHING SECTIONS

nashco.com.au 28 Carrington St Queanbeyan, NSW 2620 P 02 6124 3400 E support@nashco.com.au

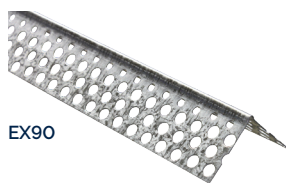
METAL SETTING ANGLES



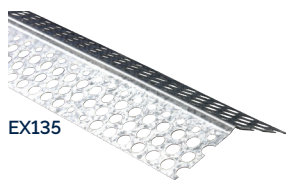
IN90



IN135



EX90



EX135



N32



AB180



BA90



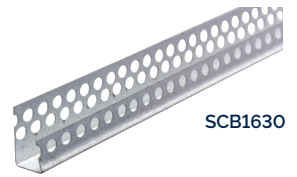
SL10

PART	DESCRIPTION	PACK	LENGTH
90° INTERNAL ANGLES			
IN9024	90° INTERNAL ANGLE	50	2400
IN9027	90° INTERNAL ANGLE	50	2700
IN9030	90° INTERNAL ANGLE	50	3000
IN9036	90° INTERNAL ANGLE	50	3600
135° INTERNAL ANGLES			
IN13524	135° INTERNAL ANGLE	50	2400
IN13527	135° INTERNAL ANGLE	50	2700
IN13530	135° INTERNAL ANGLE	50	3000
IN13536	135° INTERNAL ANGLE	50	3600
90° EXTERNAL ANGLES			
EX9024	90° EXTERNAL ANGLE	50	2400
EX9025	90° EXTERNAL ANGLE	50	2550
EX9027	90° EXTERNAL ANGLE	50	2700
EX9030	90° EXTERNAL ANGLE	50	3000
EX9036	90° EXTERNAL ANGLE	50	3600
135° EXTERNAL ANGLES			
EX13524	135° EXTERNAL ANGLE	50	2400
EX13527	135° EXTERNAL ANGLE	50	2700
EX13530	135° EXTERNAL ANGLE	50	3000
EX13536	135° EXTERNAL ANGLE	50	3600
90° EXPANDED MESH EXTERNAL ANGLES			
N3224	90° EXPANDED MESH EXTERNAL ANGLE	10	2400
N3227	90° EXPANDED MESH EXTERNAL ANGLE	10	2700
N3230	90° EXPANDED MESH EXTERNAL ANGLE	10	3000
N3236	90° EXPANDED MESH EXTERNAL ANGLE	10	3600
ARCH BEADS			
AB18030	ARCH BEAD	50	3000
AB18036 ^M	ARCH BEAD	50	3600
BACKING ANGLES			
BA9024	BACKING ANGLE (NON PERFORATED)	20	2400
BA9027	BACKING ANGLE (NON PERFORATED)	20	2700
BA9030	BACKING ANGLE (NON PERFORATED)	20	3000
SHADOW LINE			
SL630	6MM SHADOWLINE	20	3000
SL1030	10MM SHADOWLINE	20	3000

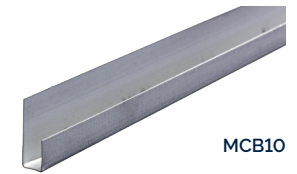
PART	DESCRIPTION	PACK	LENGTH
SET CASING BEADS			
SCB630	6MM SET CASING BEAD [SHORT LEG PERFORATED]	20	3000
SCB1030	10MM SET CASING BEAD [SHORT LEG PERFORATED]	20	3000
SCB1330	13MM SET CASING BEAD [SHORT LEG PERFORATED]	20	3000
SCB1630	16MM SET CASING BEAD [BOTH LEGS PERFORATED]	20	3000
METAL CASING BEADS [NON PERFORATED]			
MCB630	6MM METAL CASING BEAD	20	3000
MCB1030	10MM METAL CASING BEAD	20	3000
MCB1330	13MM METAL CASING BEAD	20	3000
MCB1630	16MM METAL CASING BEAD	20	3000
EXPANSION JOINT			
EXJ1030	10MM EXPANSION JOINT	10	3000
LONG LEG STOPPING ANGLES [L-BEADS]			
LSA1030	10MM LONG LEG STOPPING ANGLE	20	3000
LSA1330	13MM LONG LEG STOPPING ANGLE	20	3000
LSA1630	16MM LONG LEG STOPPING ANGLE	20	3000
LSA3030	30MM LONG LEG STOPPING ANGLE	20	3000
LSAS1030	10MM LONG LEG STOPPING ANGLE WITH FLEXIBLE BLACK SEAL	20	3000
RADIUS CORNER RENDER BEADS			
N0230	2.5MM RADIUS CORNER RENDER BEAD 3.0M (R02)	20	3600
N02AL30 ^{N1}	2.5MM RADIUS CORNER ALUMINIUM RENDER BEAD 3.0M	20	3000
N02SS30 ^{N1}	2.5MM RADIUS CORNER STAINLESS STEEL RENDER BEAD	50	3000
EXPANDED MESH EXTERNAL ANGLES			
N32AL30 ^{N1}	32MM ALUMINIUM EXPANDED MESH EXTERNAL ANGLE	10	3000
N32SS30 ^{N1}	32MM STAINLESS STEEL EXPANDED MESH EXTERNAL ANGLE	10	3000

NOTE | ^{N1}NON-STOCK ITEMS ARE SUBJECT TO MANUFACTURING LEAD TIMES.

NOTE | ^{N1}STAINLESS STEEL AND ALUMINIUM ANGLES ARE SUITABLE FOR EXTERIOR APPLICATION .



SCB1630



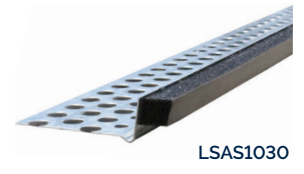
MCB10



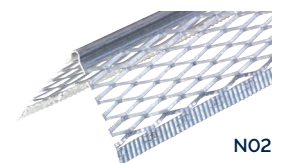
EXJ10



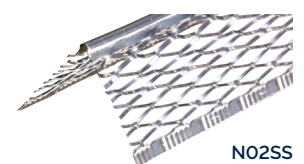
LSA16



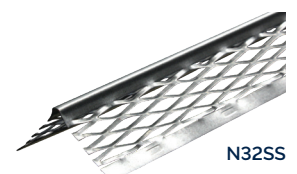
LSAS1030



N02



N02SS

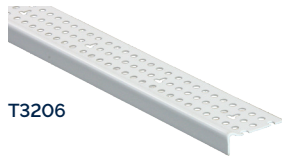


N32SS

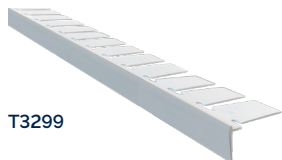
TRIM-TEX PVC SETTING ANGLES



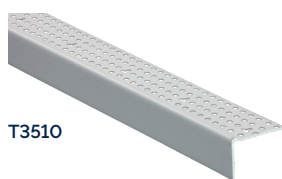
T093V



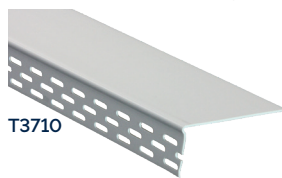
T3206



T3299



T3510



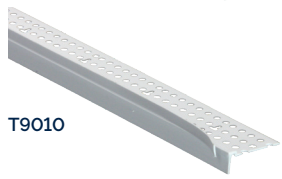
T3710



T3850



T9000



T9010



PCB10



NBCBA

PART	DESCRIPTION	PACK	LENGTHS
EXPANSION JOINTS TEARAWAY			
T093V	'V' EXPANSION JOINT TEARAWAY	20	3000
T2710	'W' HIDEAWAY EXPANSION JOINT TEARAWAY	25	3000
L-BEADS			
T3206	10MM L-BEAD	80	3000
T3210	13MM L-BEAD	80	3000
T3288	13MM ARCHWAY L-BEAD	50	3000
T3299	16MM ARCHWAY L-BEAD	50	3000
T3510	25MM L-BEAD	50	3000
T3610	32MM L-BEAD	50	3000
T3611	68MM L-BEAD (PRESCORED AT 53MM)	50	3000
T3710	80MM L-BEAD (PRESCORED AT 41MM, 53MM & 66MM)	30	3000
T3850	145MM L-BEAD (PRESCORED AT 95MM, 109MM & 122MM)	20	3000
FINISH TRIMS			
T3910	FINISH TRIM	30	3000
T3950	COVE FINISH TRIM	30	3000
TEARAWAY BEADS			
T9000	FLAT BEAD TEARAWAY	50	3000
T9002	6MM L-BEAD TEARAWAY	50	3000
T9004	10MM L-BEAD TEARAWAY	50	3000
T9010	13MM L-BEAD TEARAWAY	50	3000
T9110 ^N	16MM L-BEAD TEARAWAY	50	3000
CASING BEADS			
PCB624	6MM PVC CASING BEAD	25	2400
PCB630	6MM PVC CASING BEAD	25	3000
PCB1024	10MM PVC CASING BEAD	25	2400
PCB1030	10MM PVC CASING BEAD	25	3000
PCB1324 ^N	13MM PVC CASING BEAD	25	2400
PCB1330	13MM PVC CASING BEAD	25	3000
SPRAY ADHESIVES			
NBCBA	NBOND CORNER BEAD ADHESIVE	12	484g
T847	TRIMTEX SPRAY ADHESIVE	12	454g

NOTE | ^NNON-STOCK ITEMS ARE SUBJECT TO LEAD TIMES.

NBCBA | NASHCO NBOND CORNER BEAD ADHESIVE. PROUDLY AUSTRALIAN MADE AND OWNED.

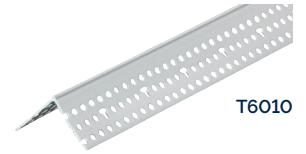


PART	DESCRIPTION	PACK	LENGTHS
EXTERNAL ANGLES			
T4010	90° EXTERNAL ANGLE	50	3000
T6010 ^M	90° EXTERNAL ANGLE SLIMLINE	50	3000
TS010	90° EXTERNAL SKIMCOAT CORNER	50	3000
TRS10	135° EXTERNAL [120°-140°]	40	3000
INTERNAL ANGLES			
T4350	90° INTERNAL ANGLE	50	3000
T4310	135° ADJUSTABLE INTERNAL [70°-150°]	70	3000
ARCHWAY			
T4150	ARCHWAY INTERNAL ANGLE	50	3000
T4110	ARCHWAY EXTERNAL ANGLE	50	3000
SHADOWLINE			
T5390	6x10MM SHADOWLINE TEARAWAY	25	3000
T5380	10x10MM SHADOWLINE TEARAWAY	25	3000
T5510	13x13MM SHADOWLINE TEARAWAY	50	3000
T5330	10x10MM ARCHWAY SHADOWLINE TEARAWAY	25	3000
REVEAL BEADS			
T5110 ^M	13MM REVEAL BEAD	20	3000
T5130 ^M	10MM REVEAL BEAD	20	3000
MAGIC CORNER			
T4325-3M ^M	MAGIC CORNER [3M LENGTH]	1 LENGTH	3000
T4325-60	MAGIC CORNER PER ROLL [60M ROLL]	1 ROLL	60000

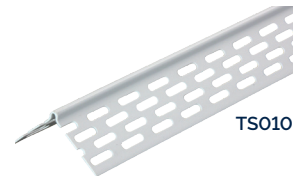
NOTE | NON-STOCK ITEMS ARE SUBJECT TO LEAD TIMES.



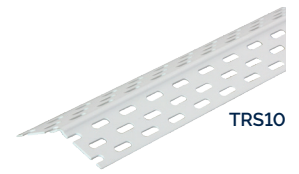
T4010



T6010



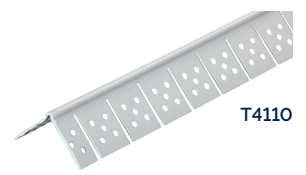
TS010



TRS10



T4310



T4110

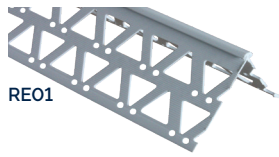


T5380



T5510

PVC RENDERER ANGLES



RE01



RE2.5



RE3.5



RE6.0



RE9030



RTL2.5

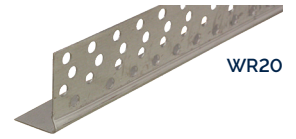
PART	DESCRIPTION	PACK	LENGTHS
RE0.1 ^N	4-12MM BUILD T-TOP EXTERNAL RENDER ANGLE 90°	40	3000
RE2.5 ^N	2.5MM BUILD T-TOP EXTERNAL RENDER ANGLE 90°	50	3000
RE3.5 ^N	3.5MM BUILD T-TOP EXTERNAL RENDER ANGLE 90°	50	3000
RE4.5 ^N	4.5MM BUILD T-TOP EXTERNAL RENDER ANGLE 90°	50	3000
RE6.0 ^N	6.0MM BUILD T-TOP EXTERNAL RENDER ANGLE 90°	50	3000
BULLNOSE ANGLES			
RE90302.5 ^N	2.5MM BUILD BULLNOSE EXTERNAL RENDER ANGLE 90°	50	3000
RMESH2.5 ^N	2.5MM BUILD BULLNOSE RENDER MESH TRIM 90°	50	3000
RMESH3.5 ^N	3.5MM BUILD BULLNOSE RENDER MESH TRIM 90°	50	3000
L-BEAD			
RTL2.5 ^N	2.5MM BUILD 10MM L-BEAD TEARAWAY	50	3000

NOTE

^NNON-STOCK ITEMS. MINIMUM QUANTITIES AND LEAD TIMES APPLY.

ZINCANNEAL® SQUARE SET FINISHING SECTIONS

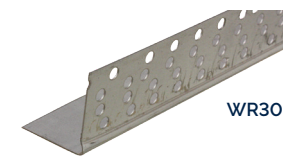
PART	DESCRIPTION	PACK	LENGTHS
WR2030	20MM x 0.80BMT WINDOW REVEAL ANGLE	1	3000
WR2036	20MM x 0.80BMT WINDOW REVEAL ANGLE	1	3600
WR2530	25MM x 0.80BMT WINDOW REVEAL ANGLE	1	3000
WR2536	25MM x 0.80BMT WINDOW REVEAL ANGLE	1	3600
WR3030	30MM x 0.80BMT WINDOW REVEAL ANGLE	1	3000
WR3036	30MM x 0.80BMT WINDOW REVEAL ANGLE	1	3600
WR3530	35MM x 0.80BMT WINDOW REVEAL ANGLE	1	3000
WR3536	35MM x 0.80BMT WINDOW REVEAL ANGLE	1	3600
WR4030	40MM x 0.80BMT WINDOW REVEAL ANGLE	1	3000
WR4036	40MM x 0.80BMT WINDOW REVEAL ANGLE	1	3600
WR4530	45MM x 0.80BMT WINDOW REVEAL ANGLE	1	3000
WR4536	45MM x 0.80BMT WINDOW REVEAL ANGLE	1	3600
WR5030	50MM x 0.80BMT WINDOW REVEAL ANGLE	1	3000
WR5036	50MM x 0.80BMT WINDOW REVEAL ANGLE	1	3600
WR6030	60MM x 0.80BMT WINDOW REVEAL ANGLE	1	3000
WR6036	60MM x 0.80BMT WINDOW REVEAL ANGLE	1	3600
WR6530	65MM x 0.80BMT WINDOW REVEAL ANGLE	1	3000
WR6536	65MM x 0.80BMT WINDOW REVEAL ANGLE	1	3600
WR7530	75MM x 0.80BMT WINDOW REVEAL ANGLE	1	3000
WR7536	75MM x 0.80BMT WINDOW REVEAL ANGLE	1	3600
WR8030	80MM x 0.80BMT WINDOW REVEAL ANGLE	1	3000
WR8036	80MM x 0.80BMT WINDOW REVEAL ANGLE	1	3600
WR9030	90MM x 0.80BMT WINDOW REVEAL ANGLE	1	3000
WR9036	90MM x 0.80BMT WINDOW REVEAL ANGLE	1	3600
WR10030	100MM x 0.80BMT WINDOW REVEAL ANGLE	1	3000
WR10036	100MM x 0.80BMT WINDOW REVEAL ANGLE	1	3600
WR11030	110MM x 0.80BMT WINDOW REVEAL ANGLE	1	3000
WR11036	110MM x 0.80BMT WINDOW REVEAL ANGLE	1	3600
WR12030	120MM x 0.80BMT WINDOW REVEAL ANGLE	1	3000
WR12036	120MM x 0.80BMT WINDOW REVEAL ANGLE	1	3600
WR13530	135MM x 0.80BMT WINDOW REVEAL ANGLE	1	3000
WR13536	135MM x 0.80BMT WINDOW REVEAL ANGLE	1	3600
WR15030	150MM x 0.80BMT WINDOW REVEAL ANGLE	1	3000
WR15036	150MM x 0.80BMT WINDOW REVEAL ANGLE	1	3600
WR20030 ^N	200MM x 0.80BMT WINDOW REVEAL ANGLE	1	3000
WR25030 ^N	250MM x 0.80BMT WINDOW REVEAL ANGLE	1	3000



WR20



WR25



WR30



WR35



WR40



WR45



WR50



WR60



WR80



WR150

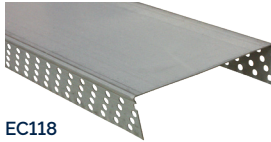
NOTE

NON-STOCK ITEMS ARE SUBJECT TO MANUFACTURING LEAD TIMES.
CUSTOM SIZES AVAILABLE ON REQUEST.

ZINCANNEAL® SQUARE SET FINISHING SECTIONS



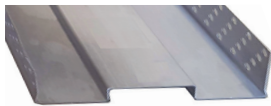
EC86



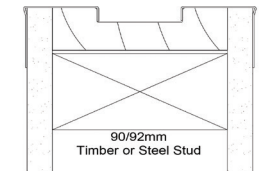
EC118



ECSR9030 + EJCST3330



ECR112



ECSRCTIM

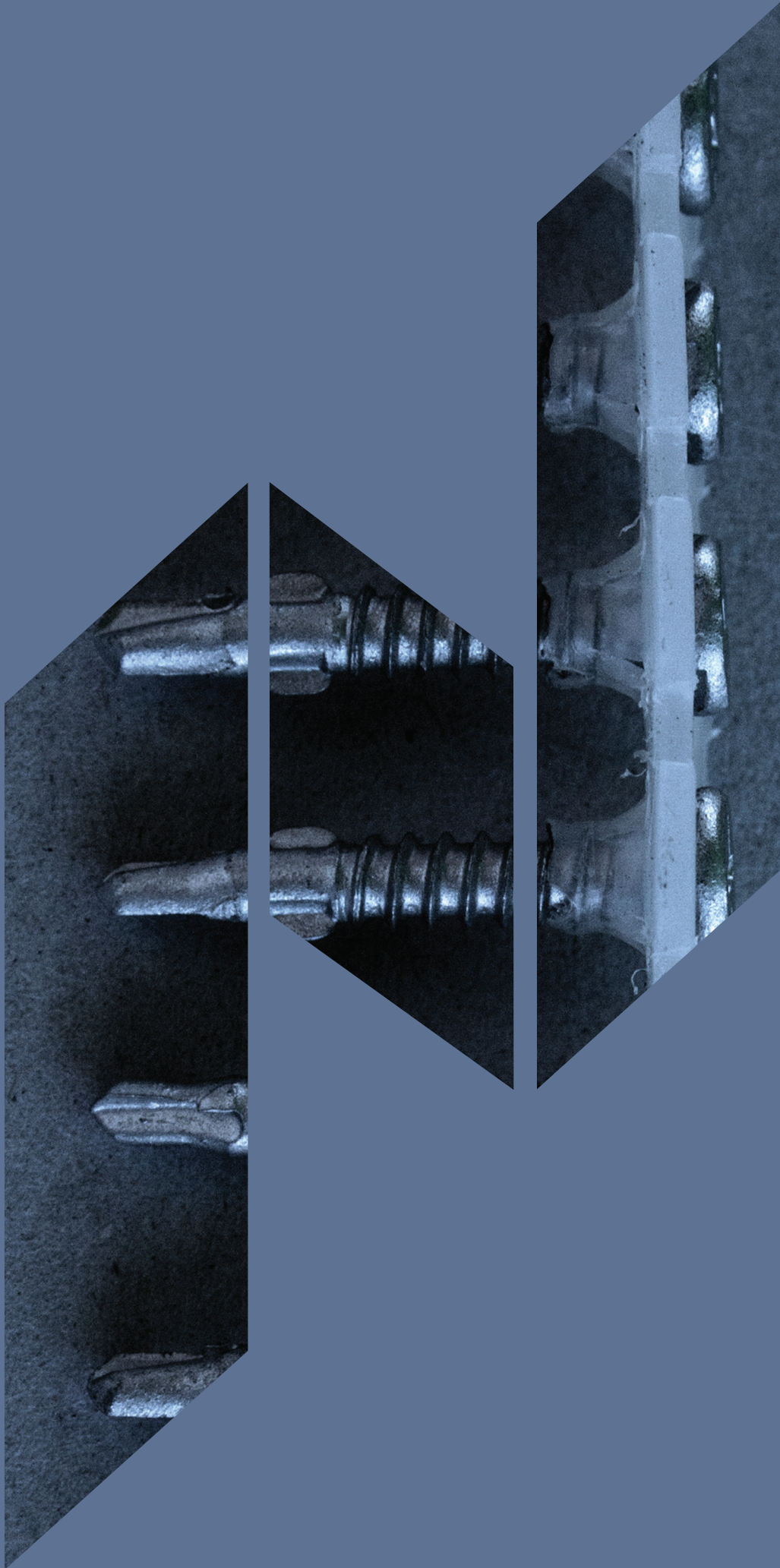


EJCST33

PART	DESCRIPTION	PACK	LENGTHS
END CAPS			
EC7927 ^N	79MM x 0.80BMT END-CAP	1	2700
EC7930 ^N	79MM x 0.80BMT END-CAP	1	3000
EC8627 ^N	86MM x 0.80BMT END-CAP	1	2700
EC8630 ^N	86MM x 0.80BMT END-CAP	1	3000
EC9227 ^N	92MM x 0.80BMT END-CAP	1	2700
EC9230	92MM x 0.80BMT END-CAP	1	3000
EC9827 ^N	98MM x 0.80BMT END-CAP	1	2700
EC9830 ^N	98MM x 0.80BMT END-CAP	1	3000
EC10427 ^N	104MM x 0.80BMT END-CAP	1	2700
EC10430 ^N	104MM x 0.80BMT END-CAP	1	3000
EC11227	112MM x 0.80BMT END-CAP	1	2700
EC11230	112MM x 0.80BMT END-CAP	1	3000
EC11827	118MM x 0.80BMT END-CAP	1	2700
EC11830	118MM x 0.80BMT END-CAP	1	3000
EC12727	127MM x 0.80BMT END-CAP	1	2700
EC12730	127MM x 0.80BMT END-CAP	1	3000
REBATED END CAPS			
EJCSRC8530	85x10MM REBATE CHANNEL SUITS CAVITY SLIDER TRIM	1	3000
ECR112 ^N	112MM REBATED END CAP	1	2700
EJCSRCTIM ^N	TIMBER OPTION	1	3000
CAVITY SLIDER TRIMS			
EJCST2930	29MM CAVITY SLIDER TRIM x 3.0M	1	3000
EJCST3330	33MM CAVITY SLIDER TRIM x 3.0M	1	3000
EJCST3630	36MM CAVITY SLIDER TRIM x 3.0M	1	3000

NOTE

^NNON-STOCK ITEMS ARE SUBJECT TO MANUFACTURING LEAD TIMES.



ADDITIONAL PRODUCTS

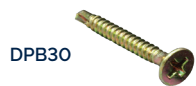
nashco.com.au 28 Carrington St Queanbeyan, NSW 2620 P 02 6124 3400 E support@nashco.com.au

FASTENERS

PHILLIPS BUGLE HEAD



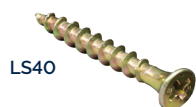
SPB32



DPB30



CTD32



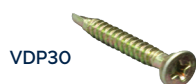
LS40

PART	DESCRIPTION	COATING	SIZE	PACK
SPB25	NEEDLE POINT BUGLE HEAD FINE THREAD	ZINC YELLOW	6Gx25	1000
SPB32	NEEDLE POINT BUGLE HEAD FINE THREAD	ZINC YELLOW	6Gx32	1000
SPB41	NEEDLE POINT BUGLE HEAD FINE THREAD	ZINC YELLOW	6Gx41	1000
SPB45	NEEDLE POINT BUGLE HEAD FINE THREAD	ZINC YELLOW	6Gx45	1000
SPB50	NEEDLE POINT BUGLE HEAD FINE THREAD	ZINC YELLOW	7Gx50	1000
SPB65	NEEDLE POINT BUGLE HEAD FINE THREAD	ZINC YELLOW	8Gx65	500
SPB75	NEEDLE POINT BUGLE HEAD FINE THREAD	ZINC YELLOW	8Gx75	500
SPB100 ^M	NEEDLE POINT BUGLE HEAD FINE THREAD	ZINC YELLOW	8Gx100	500
DPB25	DRILL POINT BUGLE HEAD FINE THREAD	ZINC YELLOW	6Gx25	1000
DPB30	DRILL POINT BUGLE HEAD FINE THREAD	ZINC YELLOW	6Gx32	1000
DPB45	DRILL POINT BUGLE HEAD FINE THREAD	ZINC YELLOW	6Gx45	1000
DPB50	DRILL POINT BUGLE HEAD FINE THREAD	ZINC YELLOW	8Gx50	500
DPB65	DRILL POINT BUGLE HEAD FINE THREAD	ZINC YELLOW	8Gx65	500
CTD25	NEEDLE POINT BUGLE HEAD COARSE THREAD	ZINC YELLOW	6Gx25	1000
CTD32	NEEDLE POINT BUGLE HEAD COARSE THREAD	ZINC YELLOW	6Gx32	1000
LS40	LAMINATING SCREW	ZINC YELLOW	10Gx40	1000
LS50	LAMINATING SCREW	ZINC YELLOW	10Gx50	1000

PHILLIPS SELF EMBEDDING HEAD



VSP30



VDP30



FHDP825



FH1725



WT25



CBS45

PART	DESCRIPTION	COATING	SIZE	PACK
VSP20	NEEDLE POINT VILLABOARD SCREW	ZINC YELLOW	8Gx20	500
VSP30	NEEDLE POINT VILLABOARD SCREW	ZINC YELLOW	8Gx30	500
VDP20	DRILL POINT VILLABOARD SCREW	ZINC YELLOW	8Gx20	1000
VDP30	DRILL POINT VILLABOARD SCREW	ZINC YELLOW	8Gx30	1000
FHDP825	DRILL POINT FLOWER HEAD	CLASS 4	8Gx25	1000
FHDP1025	DRILL POINT FLOWER HEAD	CLASS 4	10Gx25	1000
FH1725	TYPE 17 FLOWER HEAD	CLASS 4	8Gx25	1000
WT25	WING TEK SELF EMBEDDING HEAD	CLASS 3	7Gx25	1000
WT35	WING TEK SELF EMBEDDING HEAD	CLASS 3	7Gx35	1000
WT45 ^M	WING TEK SELF EMBEDDING HEAD	CLASS 3	10Gx45	500
CBS25	CHIPBOARD SCREW SELF EMBEDDING HEAD	ZINC YELLOW	8Gx25	1000
CBS35	CHIPBOARD SCREW SELF EMBEDDING HEAD	ZINC YELLOW	8Gx35	1000
CBS45	CHIPBOARD SCREW SELF EMBEDDING HEAD	ZINC YELLOW	8Gx45	1000
CBS65	CHIPBOARD SCREW SELF EMBEDDING HEAD	ZINC YELLOW	10Gx65	500
CBS75	CHIPBOARD SCREW SELF EMBEDDING HEAD	ZINC YELLOW	10Gx75	500

NOTE

^MNON-STOCK ITEMS ARE SUBJECT TO LEAD TIMES.

COUNTERSUNK HEAD

PART	DESCRIPTION	COATING	SIZE	PACK
T17CSCC31040 ^N	TYPE 17 COUNTERSUNK COARSE THREAD	CLASS 3	10Gx40	1000
HGD30	DRILL POINT COUNTERSUNK	CLASS 3	10Gx30	1000
HGD40	DRILL POINT COUNTERSUNK	CLASS 3	10Gx40	1000



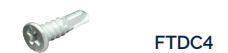
HEX DRIVE BUGLE

PART	DESCRIPTION	COATING	SIZE	PACK
BBS50 ^N	TYPE 17 HEX DRIVE BUGLE BATTEN SCREW	CLASS 3	14Gx50	500
BBS75 ^N	TYPE 17 HEX DRIVE BUGLE BATTEN SCREW	CLASS 3	14Gx75	500
BBS100 ^N	TYPE 17 HEX DRIVE BUGLE BATTEN SCREW	CLASS 3	14Gx100	500



PHILLIPS FLAT TOP | BUTTON HEAD

PART	DESCRIPTION	COATING	SIZE	PACK
FTD	DRILL POINT FLAT TOP	ZINC YELLOW	10Gx16	1000
FTDC4	DRILL POINT FLAT TOP	CLASS 4	10Gx16	1000
FTD22C4	DRILL POINT FLAT TOP	CLASS 4	10Gx22	1000
FTD32C4	DRILL POINT FLAT TOP	CLASS 4	10Gx32	1000
BHD12	DRILL POINT BUTTON HEAD	ZINC YELLOW	8Gx12	1000
BHD16	DRILL POINT BUTTON HEAD	ZINC YELLOW	8Gx16	1000
BHD25	DRILL POINT BUTTON HEAD	ZINC YELLOW	8Gx25	1000
BHD32	DRILL POINT BUTTON HEAD	ZINC YELLOW	8Gx32	1000
BHS12	NEEDLE POINT BUTTON HEAD	ZINC YELLOW	8Gx12	1000
BHS16	NEEDLE POINT BUTTON HEAD	ZINC YELLOW	8Gx16	1000
BHS25	NEEDLE POINT BUTTON HEAD	ZINC YELLOW	8Gx25	1000
BHS30	NEEDLE POINT BUTTON HEAD	ZINC YELLOW	8Gx30	1000



HEX HEAD

PART	DESCRIPTION	COATING	SIZE	PACK
HEXDR16 ^{N1}	DRILL POINT HEX HEAD	CLASS 3	10Gx16	1000
HEXDR20 ^{N1}	DRILL POINT HEX HEAD	CLASS 3	12Gx20	1000
HEXDR35	DRILL POINT HEX HEAD	CLASS 3	12Gx35	1000
HEXDR45	DRILL POINT HEX HEAD	CLASS 3	12Gx45	1000
HEXDR55	DRILL POINT HEX HEAD (INCL. GUARD WASHER)	CLASS 3	12Gx55	500
HEX1730	TYPE 17 HEX HEAD COARSE THREAD	CLASS 3	10Gx30	1000
HEX1740	TYPE 17 HEX HEAD COARSE THREAD	CLASS 3	12Gx40	1000
HEX1750	TYPE 17 HEX HEAD COARSE THREAD	CLASS 3	12Gx50	1000
VHEXDR40	DRILL POINT HEX HEAD VORTEX BATTEN ZIP	CLASS 3	12Gx40	1000
S50032	SERIES 500 EXTENDED DRILL POINT SCREW	CLASS 3	12Gx32	1000
S50050	SERIES 500 EXTENDED DRILL POINT SCREW	CLASS 3	12Gx50	1000
S50065	SERIES 500 EXTENDED DRILL POINT SCREW	CLASS 3	12Gx65	1000



NOTE ^NNON-STOCK ITEMS ARE SUBJECT TO LEAD TIMES.

NOTE ^{N1}ALSO AVAILABLE IN ZINC COATING. SUBJECT TO LEAD TIMES.

FASTENERS



COL-SPB



COL-DPB



COL-CTH



COL-FHDP



COL-FH17



COL-WT25



39640



05R540



1432



15B08-50



GP35-100



SA6545



DB0865



RSH



RSH

COLLATED SCREWS

PART	DESCRIPTION	COATING	SIZE	PACK
COL-SPB25	NEEDLE POINT BUGLE HEAD FINE THREAD	ZINC YELLOW	6Gx25	1000
COL-SPB32	NEEDLE POINT BUGLE HEAD FINE THREAD	ZINC YELLOW	6Gx32	1000
COL-SPB42	NEEDLE POINT BUGLE HEAD FINE THREAD	ZINC YELLOW	6Gx42	1000
COL-SPB50	NEEDLE POINT BUGLE HEAD FINE THREAD	ZINC YELLOW	7Gx50	1000
COL-DPB25	DRILL POINT BUGLE HEAD FINE THREAD	ZINC YELLOW	6Gx25	1000
COL-DPB32	DRILL POINT BUGLE HEAD FINE THREAD	ZINC YELLOW	6Gx32	1000
COL-DPB42	DRILL POINT BUGLE HEAD FINE THREAD	ZINC YELLOW	6Gx42	1000
COL-CTH25	NEEDLE POINT BUGLE HEAD COARSE THREAD	ZINC YELLOW	6Gx25	1000
COL-CTH32	NEEDLE POINT BUGLE HEAD COARSE THREAD	ZINC YELLOW	6Gx32	1000
COL-CTH42	NEEDLE POINT BUGLE HEAD COARSE THREAD	ZINC YELLOW	6Gx42	1000
COL-FHDP25	DRILL POINT FLOWER HEAD	CLASS 4	8Gx25	1000
COL-FH1725	TYPE 17 FLOWER HEAD	CLASS 3	8Gx25	1000
COL-WT25	WING TEK SELF EMBEDDING HEAD	CLASS 3	7Gx25	1000
COL-WT35	WING TEK SELF EMBEDDING HEAD ^M	CLASS 3	7Gx35	1000

MASONRY ANCHORS

PART	DESCRIPTION	SIZE	PACK
39640	BETTA DRIVE NYLON ANCHOR	6Gx40	100
39660	BETTA DRIVE NYLON ANCHOR	6Gx60	100
39670	BETTA DRIVE NYLON ANCHOR	6Gx70	100
05R525 ^N	ROUND HEAD NYLON ANCHOR	5Gx25	100
05R540 ^N	ROUND HEAD NYLON ANCHOR	5Gx40	100
05R625 ^N	ROUND HEAD NYLON ANCHOR	6.5Gx25	100
05R640 ^N	ROUND HEAD NYLON ANCHOR	6.5Gx40	100
05R650 ^N	ROUND HEAD NYLON ANCHOR	6.5Gx50	100
1432	MACDRIVE METAL ANCHOR	6.5Gx32	100
1450	MACDRIVE METAL ANCHOR	6.5Gx50	100
15B08-50	MUNGO [®] PLUGS	8Gx50	50
GP-100	GREEN MASONRY PLUGS	7Gx35	100
SA6532	TX-CON SHARP POINT HEX HEAD SLOTTED SCREW ANCHOR	6.5Gx32	100
SA6545	TX-CON SHARP POINT HEX HEAD SLOTTED SCREW ANCHOR	6.5Gx45	100
SA65100	TX-CON SHARP POINT HEX HEAD SLOTTED SCREW ANCHOR	6.5Gx100	100
DB1060	DYNABOLT ZINC YELLOW	10Gx60	50

NAILS

PART	DESCRIPTION	SIZE	PACK
RSH2.5KG	RING SHANK NAIL	2.8Gx30	2.5KG BAG
RSH25KG	RING SHANK NAIL	2.8Gx30	25KG BOX

NOTE

^MNON-STOCK ITEMS ARE SUBJECT TO LEAD TIMES.

SCREWBOLTS [NON-ETA APPROVED]

PART	DESCRIPTION	COATING	SIZE	PACK
SB0650	SCREWBOLT <i>[REQ. 6MM HOLE INTO SUBSTRATE]</i>	ZINC YELLOW	6Gx50	100
SB0675	SCREWBOLT <i>[REQ. 6MM HOLE INTO SUBSTRATE]</i>	ZINC YELLOW	6Gx75	50
SB06100	SCREWBOLT <i>[REQ. 6MM HOLE INTO SUBSTRATE]</i>	ZINC YELLOW	6Gx100	50
SB1075	SCREWBOLT <i>[REQ. 10MM HOLE INTO SUBSTRATE]</i>	ZINC YELLOW	10Gx75	50
SB10100	SCREWBOLT <i>[REQ. 12MM HOLE INTO SUBSTRATE]</i>	ZINC YELLOW	10Gx100	50
SB12100	SCREWBOLT <i>[REQ. 12MM HOLE INTO SUBSTRATE]</i>	ZINC YELLOW	12Gx100	50



SB1075

SCREWBOLTS [ETA APPROVED]^{N2}

PART	DESCRIPTION	COATING	SIZE	PACK
SB645.H ^N	HILTI™ HUS3-H SCREW ANCHOR	GALVANISED	6Gx45	100
SB643C3.IC	ICCONS® RED TRACK HAWK THUNDERBOLT® PRO	GALVANISED	6Gx43	100
SB645.IC	ICCONS® THUNDERBOLT® PRO	ZINC	6Gx45	100
SB855C3.IC	ICCONS® THUNDERBOLT® PRO	GALVANISED	8Gx55	100
SB860C3.IC	ICCONS® THUNDERBOLT® PRO	GALVANISED	8Gx60	100
SB1060C3.IC	ICCONS® THUNDERBOLT® PRO	ZINC	10Gx60	50
SB650.R ^N	RAMSET™ ANKASCREW™ XTREM™ SCREW BOLT	GALVANISED	6Gx50	100
SB680.R ^N	RAMSET™ ANKASCREW™ XTREM™ SCREW BOLT	GALVANISED	6Gx80	100
SB860.R ^N	RAMSET™ ANKASCREW™ XTREM™ SCREW BOLT	GALVANISED	8Gx60	100



SB645.H



SB645C3.IC



SB645.IC



SB650.R

ROD ACCESSORIES

PART	DESCRIPTION	COATING	SIZE	PACK
DSM06	DYNASET MASONRY ANCHOR	ZINC YELLOW	6MM	100
DSM08	DYNASET MASONRY ANCHOR	ZINC YELLOW	8MM	100
DSM10	DYNASET MASONRY ANCHOR	ZINC YELLOW	10MM	100
DSM12	DYNASET MASONRY ANCHOR	ZINC YELLOW	12MM	100
4106	DYNASET MASONRY ANCHOR SETTING TOOL	ZINC YELLOW	-	1
TSB10.IC ^{N2}	M10 SCREWBOLT THREADED ROD ANCHOR	ZINC	10MM	100
AT6	M6 THREADED ROD	ZINC PLATED	3000	1 10
AT8	M8 THREADED ROD	ZINC PLATED	3000	1 10
AT10	M10 THREADED ROD	ZINC PLATED	3000	1 10
AT12	M12 THREADED ROD	ZINC PLATED	3000	1 10
ZC6	M6 THREADED ROD JOINER	ZINC PLATED	6MM	1 10
ZC8	M8 THREADED ROD JOINER	ZINC PLATED	8MM	1 10
ZC10	M10 THREADED ROD JOINER	ZINC PLATED	10MM	1 10
ZC12	M10 THREADED ROD JOINER	ZINC PLATED	12MM	1 10
N21T ^N	SUSPENSION ROD THREADED ONE END	ZINC PLATED	CUSTOM	1 10
N21B ^N	SUSPENSION ROD BENT ONE END	ZINC PLATED	CUSTOM	1 10



DSM10



TSB10.IC



AT8



ZC6

ZC8

ZC10



N21T



N21B

NOTE

^N NON-STOCK ITEMS ARE SUBJECT TO LEAD TIMES.

^{N2} ETA APPROVED & C1 + C2 SEISMIC RATED. FURTHER PRODUCTS AVAILABLE ON REQUEST. FOR MORE INFORMATION REGARDING A SUITABLE USE OF THESE PRODUCTS PLEASE REACH OUT TO OUR DESIGN TEAM.

PLASTER ACCESSORIES

HA15-AU



PART	DESCRIPTION	LID/BAG	PALLET QUANTITY	VOLUME
TOP COAT AND MULTI PURPOSE				
HA15-AU	HAMILTONS ALL PURPOSE TOPCOAT	BLACK	48	15L
4T	4T LITE TOPPING BUCKET	PURPLE	48	15L
BASE COAT				
CSR60	CSR BASECOAT 60MIN	YELLOW	56	20KG
CORNICE CEMENT				
PC90	PROCOVE LONGSET CORNICE CEMENT 90MIN	GREEN	60	20KG
MASONRY ADHESIVE AND PATCHING COMPOUND				
HAM5	HAMILTONS PROPATCH 5MIN	-	96	8KG
HAM20	HAMILTONS PROPATCH 20MIN	-	96	8KG
STUD ADHESIVE				
NBSA	NBOND STUD ADHESIVE	-	150	5.2KG

CSR60



NBSA



NON-STOCK ITEMS AVAILABLE IN PALLET LOTS ONLY

PART	DESCRIPTION	LID/BAG	PALLET QUANTITY	VOLUME
TOP COAT AND MULTI PURPOSE				
PROBUC-G ^N	PROFORM ULTRA-LITE TOPPING	GREEN	35	17L
PROBUC-B ^N	PROFORM LITE TOPPING TINTED	BLUE	45	17L
PROBUC-R ^N	PROFORM MULTI-USE	RED	45	17L
BASE COAT				
CSR45 ^N	CSR BASECOAT 45MIN	BLUE	56	20KG
CSR90 ^N	CSR BASECOAT 90MIN	GREY	56	20KG
PRO40 ^N	PROBASE BASECOAT 40MIN	RED	60	20KG
PRO60 ^N	PROBASE BASECOAT 60MIN	BLUE	60	20KG
PRO90 ^N	PROBASE BASECOAT 90MIN	GREEN	60	20KG
CORNICE CEMENT				
CSRCOR45 ^N	CSR CORNICE CEMENT 45MIN	RED	56	20KG
CSRCOR60 ^N	CSR CORNICE CEMENT 60MIN	PURPLE	56	20KG
PC45 ^N	PROCOVE CORNICE CEMENT 45MIN	BLUE	60	20KG
MASONRY ADHESIVE AND PATCHING COMPOUND				
CSRMAS ^N	CSR MASONRY ADHESIVE	ORANGE	56	20KG

PROBUC-G



PRO60



CSRCOR45



NOTE

NON-STOCK ITEMS ARE SUBJECT TO LEAD TIMES.
PLEASE ENQUIRE WITH OUR TEAM - AVAILABLE FOR BULK PURCHASE / SPECIAL ORDER.

PACKERS, TAPES AND PLASTER TOOLS

PART	DESCRIPTION	COLOUR	SIZE	PACK
PP10	90MM WINDOW PACKER	YELLOW	1.0MM	100 1000
PP16	90MM WINDOW PACKER	PURPLE	1.6MM	100 1000
PP32	90MM WINDOW PACKER	RED	3.2MM	100 1000
PP48	90MM WINDOW PACKER	BLACK	4.8MM	100 1000
PP65	90MM WINDOW PACKER	BLUE	6.5MM	100 1000
PP100	90MM WINDOW PACKER	WHITE	10.0MM	100 1000
PP150	90MM WINDOW PACKER	ORANGE	15.0MM	100
PP200 ^N	90MM WINDOW PACKER	GREEN	20.0MM	100
PPMIX-S	90MM WINDOW PACKER MIX SMALL	ALL	SMALL	73PCS
PPMIX-L	90MM WINDOW PACKER MIX LARGE	ALL	LARGE	220PCS



PP



PPMIX-L

PART	DESCRIPTION	ROLLS / PACK	SIZE
PTH75	PAPER JOINT TAPE	20	75M
PTH150	PAPER JOINT TAPE	10	150M
5FT90R	FIBREGLASS EASYTAPE	24	90M
TX650	HOMAX TAPING TOOL	EA	-
UFL100	NO COAT ULTRAFLEX 325 [82MM]	10	30M
UFLX100	NO COAT ULTRAFLEX 450 [114MM]	4	30M
SF30	STRAITFLEX TAPE, PERFORATED	1	30M
FF75	FIBA FUSE TAPE	20	75M



PTH75

5FT90R



SF30

FF75

TRAK FAST PINS

PART	DESCRIPTION	SIZE	PACK
SUITS PULSA™ 800			
P8HC615	HARD CONCRETE PULSA™ PIN WITH GAS	15MM	500
P8HC617	HARD CONCRETE PULSA™ PIN WITH GAS	17MM	500
P8HC622	HARD CONCRETE PULSA™ PIN WITH GAS	22MM	500
SUITS DX 351, DX 5, DX 6			
X-X27MX ^N	HILTI™ X-X MX ULTIMATE DRYWALL NAILS	27MM	100



P8HC617



X-X27MX

NOTE

NON-STOCK ITEMS ARE SUBJECT TO LEAD TIMES.
PLEASE ENQUIRE WITH OUR TEAM - AVAILABLE FOR BULK PURCHASE / SPECIAL ORDER.

ACCESSORIES

ACCESSORIES

STAPLES



A1110-5M



9R10B

PART	DESCRIPTION	SIZE	PACK
A1108-5M	STERLING STAPLE - CHISEL POINT	8MM	5000
A1110-5M	STERLING STAPLE - CHISEL POINT	10MM	5000
A1112-5M	STERLING STAPLE - CHISEL POINT	12MM	5000
9R10B	RAPID STAPLE BULK PACK	10MM	5000

SEALANTS AND ADHESIVES



SA-ST



SA-GF



SA-CA-MB



SA-CA-FG



SA-CA-RA



SA-EF



SA-PS-550S



SA-PA-570S



SA-FMA-FS



SA-FMP-FB



SA-TB

PART	DESCRIPTION	SIZE	PACK
SA-ST	FULLER ROOF AND GUTTER SILICON TRANSLUCENT	300G	20
SA-GF	FULLER GAP FILLER WHITE	450G	20
SA-CA-MB	FULLER MAX BOND ORIGINAL CONSTRUCTION ADHESIVE	320G	20
SA-CA-FG	FULLER MAX BOND FAST GRIP CONSTRUCTION ADHESIVE	420G	20
SA-CA-RA	RITETACK INSTANT GRAB CONSTRUCTION ADHESIVE	290ML	12
SA-EF	FULLER FULA FOAM EXPANDING FOAM	500ML	12
SA-PS-550C ^N	FULLER 550 POLYURETHANE SEALANT ADHESIVE (CARTRIDGE)	310ML	12
SA-PS-550S	FULLER 550 POLYURETHANE SEALANT ADHESIVE (SAUSAGE)	600ML	20
SA-PA-570C ^N	FULLER 570 POLYURETHANE SEALANT ADHESIVE (CARTRIDGE)	310ML	12
SA-PA-570S	FULLER 570 POLYURETHANE SEALANT ADHESIVE (SAUSAGE)	600ML	12
SA-FMA-FS	FULLER FIRESOUND ACRYLIC FIRE MASTIC GREY (SAUSAGE)	600ML	15
SA-FMP-FB ^N	BOSTIK FIREBAN ONE POLYURETHANE FIRE MASTIC GREY (SAUSAGE)	600ML	15
SA-TB	FULLER TOOL BOX MS WHITE MULTIPURPOSE ADHESIVE	400ML	12

TAPE



FA.48MT

PART	DESCRIPTION	SIZE	PACK
FA.48MT	48MM MASKING TAPE [14 DAYS]	55M	1
DT50	PVC DUCT TAPE	36	50M

CLEANER



FA.AC-5L

PART	DESCRIPTION	SIZE	PACK
FA.AC-390ML	CT-ISO KLEANIUM ISOPROPYL ALCOHOL CLEANER (SPRAY)	390ML	1
FA.AC-5L	CT-ISO KLEANIUM ISOPROPYL ALCOHOL CLEANER	5L	1
FA.AC-20L	CT-ISO KLEANIUM ISOPROPYL ALCOHOL CLEANER	20L	1

NOTE

NON-STOCK ITEMS ARE SUBJECT TO LEAD TIMES.
PLEASE ENQUIRE WITH OUR TEAM - AVAILABLE FOR BULK PURCHASE / SPECIAL ORDER.



GUIDES

NASHCO DESIGN SERVICE



FOR BUILDERS AND ARCHITECTS

NASHCO PROVIDES A DESIGN SERVICE FOR BUILDERS AND ARCHITECTS IN THE DESIGN PROCESS OF A CONSTRUCTION PROJECT.

WITH AN INCREASING TREND TO USE LIGHT-WEIGHT STEEL FRAMING IN EXTERNAL AND FACADE APPLICATIONS, MANY PROJECTS REQUIRE COMPLEX AND NON-STANDARD CONSTRUCTION DETAILS.

WE WORK WITH BUILDERS AND ARCHITECTS IN THE TENDERING STAGE OF A PROJECT TO DEVELOP A SPECIFICATION FOR YOUR PROJECT. THIS ENABLES BUILDERS TO USE THIS IN CONJUNCTION WITH THE TENDER DOCUMENTS TO GIVE A CLEAR INDICATION OF WHAT IS REQUIRED. OTHER BENEFITS OF THIS SERVICE INCLUDE:

- FAST & EFFICIENT PROJECTS** – BY USING THE NASHCO DESIGN SERVICE BUILDERS AND CONTRACTORS EXPERIENCE A SMOOTH AND EFFICIENT PROJECT, WITH MINIMAL SITE DELAYS FOR ENGINEERING DURING CONSTRUCTION.
- PROMPT CONTRACT** – BY USING THE NASHCO DESIGN SERVICE BUILDERS TYPICALLY RECEIVE TENDERS FASTER, AS THE NASHCO TECHSPEC PROVIDES CONTRACTORS WITH AN ACCURATE ESTIMATION OF THE MATERIALS REQUIRED FOR THE PROJECT.
- PEACE OF MIND** – KNOWING THAT YOUR PROJECT HAS BEEN SPECIFIED BY A LOCAL MANUFACTURER GIVES BUILDERS, CONTRACTORS AND ARCHITECTS PEACE OF MIND KNOWING THAT EVERYTHING IS CONSTRUCTED IN ACCORDANCE WITH THE RELEVANT STANDARDS.
- PROJECT SPECIFIC** – THE NASHCO DESIGN SERVICE IS TAILORED TO YOUR PROJECT. THIS MEANS THAT THERE IS NO LONGER ANY INTERPRETATIONS OF DESIGN MANUALS OR AMBIGUITIES DURING CONSTRUCTION.

FOR CONTRACTORS

AT NASHCO WE ARE ALSO COMMITTED TO PROVIDING CONTRACTORS ON SITE WITH SOLUTIONS. WE RECOGNISE THAT THINGS ALWAYS CHANGE ON SITE AND EXTEND OUR TECHNICAL SUPPORT SERVICE TO DEVELOP SOLUTIONS WITHIN THE CONSTRUCTION CONSTRAINTS.

BY PROVIDING TIMELY AND COST-EFFECTIVE SOLUTIONS OUR CUSTOMERS HAVE FOUND THAT THEY REAP THE BENEFITS OF MINIMISED DOWNTIME AND MINIMAL OVER-BUDGET EXPENSES ON SITE.

BY DRAWING ON OVER 35 YEARS OF EXPERIENCE IN STEEL FRAMING SECTIONS WE ARE ABLE TO PROVIDE SOLUTIONS IN SITUATIONS WHERE TRADITIONAL METHODS CANNOT BE USED.

SITE INSPECTION

TO COMPLETE THE SERVICE WE OFFER SITE INSPECTIONS, PROVIDING RECOMMENDATIONS AND PROVIDE THE NECESSARY DOCUMENTATION AND WARRANTIES.

NASHCO GUARANTEES THAT PRODUCTS AND COMPONENTS SOLD BY NASHCO FOR USE IN NASHCO CEILING AND WALL SYSTEMS, HAVE BEEN DESIGNED AND TESTED TO CONFORM WITH THE RELEVANT INDUSTRY, MANUFACTURING AND AUSTRALIAN BUILDING STANDARDS.

